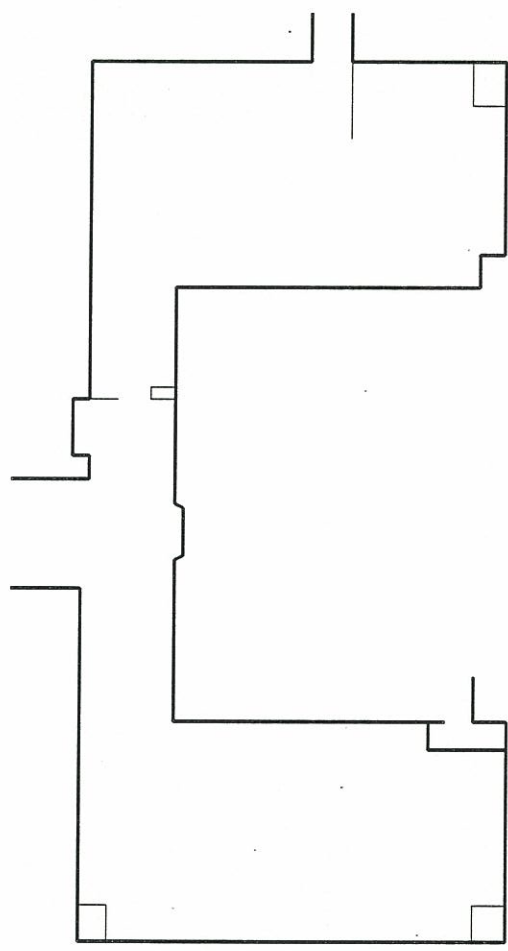




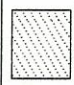




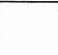
Facility: 001 State Capital Building

DAG4
078280

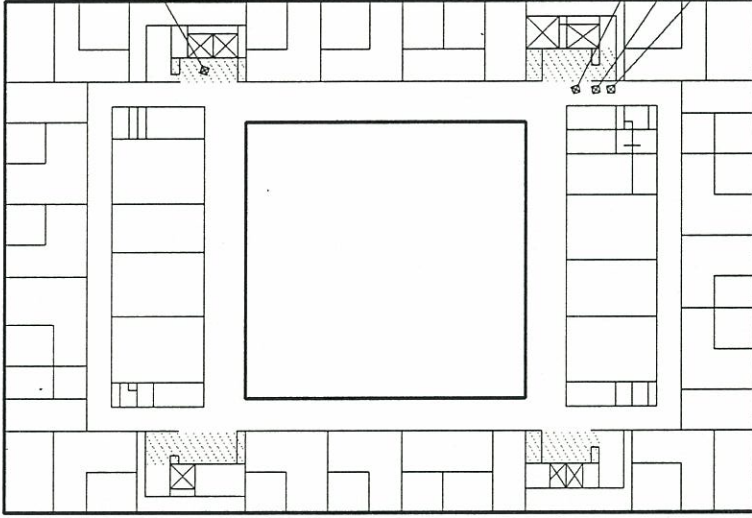


PARKING LEVEL

DAG4
078281

 VINYL FLOOR TILE		 DROP, LAY IN, ACOUSTICAL		 SPRAY/TROWEL APPLIED MATERIAL		 CAUTION BOILER ROOM ENTRANCE LOCATION OF CAUTION LABEL		 POS LABORATORY ANALYSIS		 BS01 00-02 SAMPLE LOCATION		 BS CODE LOCATION DAMAGE AREA		 RESPONSE CODE		HALL: KIMBELL ENVIRONMENTAL SERVICES 50 SOUTH BEETHOVEN STREET HONOLULU, HAWAII 96813 DATE 11/11/89 001002B		STATE OF HAWAII COST RECOVERY SURVEY 11-0031-001-001 STATE OF HAWAII ACCOUNTING AND GENERAL SERVICES HAWAII STATE CAPITOL BUILDING	
--	--	--	--	---	--	---	--	--	--	---	--	--	--	---	--	---	--	---	--

BS03
35 POS



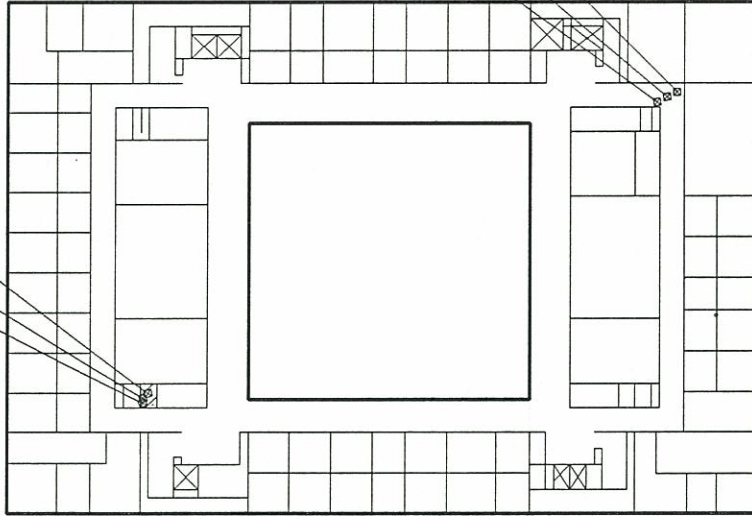
SENATE LEVEL

DAG4
078283

STATE OF HAWAII COST RECOVERY SURVEY	ENVIRONMENTAL SERVICES HALL-KIMBRELL 50 SOUTH BERETANA STREET SUITE C2088 HONOLULU, HAWAII 96813	BS01 00-02 SAMPLE LOCATION	POS LABORATORY ANALYSIS	CAUTION BOILER ROOM ENTRANCE LOCATION OF CAUTION LABEL	BSCODE QUANTITY LOCATION DAMAGE AREA	RESPONSE CODE
11-0031-001-001 STATE OF HAWAII ACCOUNTING AND GENERAL SERVICES HAWAII STATE CAPITOL BUILDING	DATE 11/11/89	BS12 75 NEG BS12 76 NEG BS12 77 NEG	NEG LABORATORY ANALYSIS	LOCATION OF CAUTION LABEL	VINYL FLOOR TILE	001002C

SPRAY/TROWEL APPLIED MATERIAL	DROP, LAY IN, ACOUSTICAL	VINYL FLOOR TILE
-------------------------------------	--------------------------------	------------------------

BS99 95 POS
 BS99 96 POS
 BS99 97 POS



BS11 78 NEG
 BS11 79 NEG
 BS11 80 NEG

HOUSE LEVEL

DAG4
 078284



VINYL FLOOR TILE



DROP LAY IN, ACOUSTICAL



SPRAY/TROWEL APPLIED MATERIAL



LOCATION OF CAUTION LABEL



LABORATORY ANALYSIS



SAMPLE LOCATION



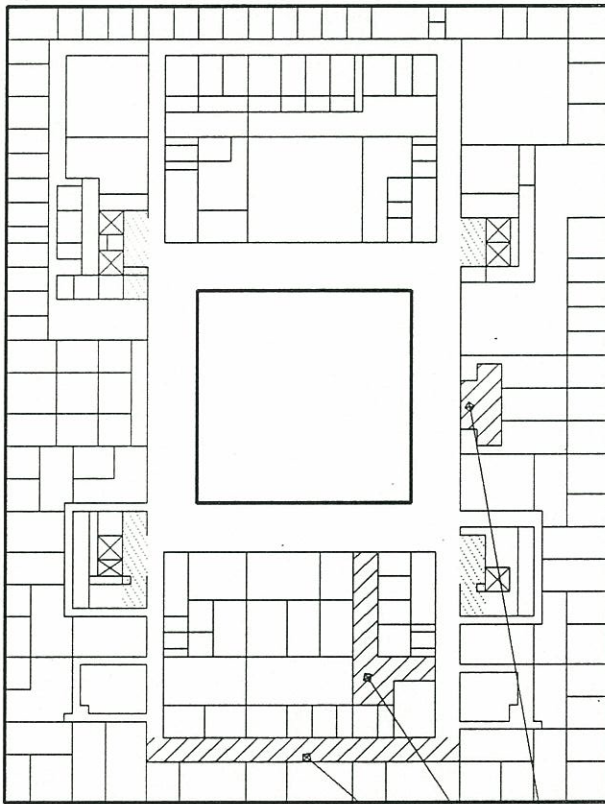
DAMAGE AREA



RESPONSE CODE

HALL, KIMBELL, ENVIRONMENTAL SERVICES
 50 SOUTH BEECHAM STREET
 SUITE 2008
 HONOLULU, HAWAII 96813
 DATE 11/11/89
 0010020

STATE OF HAWAII
 COST RECOVERY SURVEY
 11-0031-001-001
 STATE OF HAWAII
 ACCOUNTING AND GENERAL SERVICES
 HAWAII STATE CAPITOL BUILDING



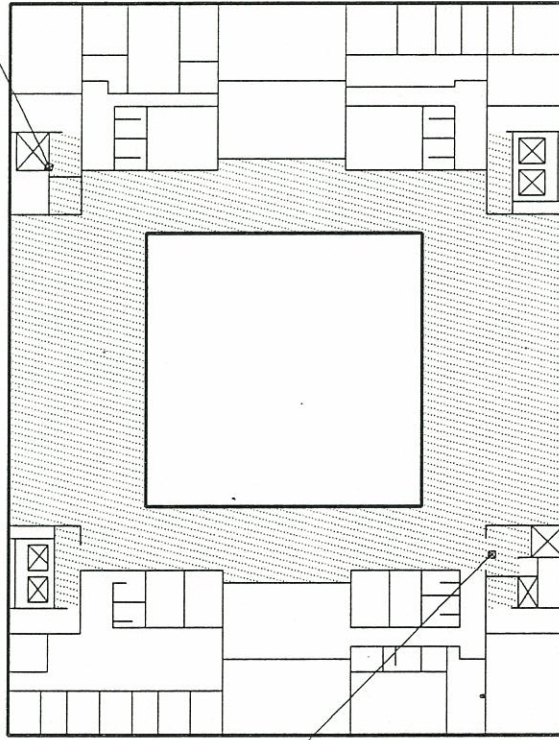
12x12 OLIVE

DAG4
078285

DEPARTMENTAL LEVEL

STATE OF HAWAII COST RECOVERY SURVEY 11-0031-001-001 STATE OF HAWAII ACCOUNTING AND GENERAL SERVICES HAWAII STATE CAPITOL BUILDING	HALL, KIMRELL, ENVIRONMENTAL SERVICES 50 SOUTH BECHTOLD STREET SUITE 2008 HONOLULU, HAWAII 96813 DATE 11/11/89	RESPONSE CODE DAMAGE AREA DASHED LINE DASHED LINE DASHED LINE	SAMPLE LOCATION LABORATORY ANALYSIS CAUTION BOILER ROOM ENTRANCE LOCATION OF CAUTION LABEL	VINYL FLOOR TILE DROP IN, ACOUSTICAL MATERIAL SPRAY/TROWEL APPLIED MATERIAL
---	---	---	---	---

BS03
36
POS



POS / BS03
37

EXECUTIVE LEVEL

DAG4
078286

VINYL FLOOR TILE DROP LAY IN, ACOUSTICAL SPRAY/TROWEL APPLIED MATERIAL	CAUTION ROOM ENTRANCE LOCATION OF CAUTION LABEL LABORATORY ANALYSIS NEG BS01 00-02 SAMPLE LOCATION BSCODE QUANTITY LOCATION DAMAGE AREA RESPONSE CODE	HALL-KIMBRELL ENVIRONMENTAL SERVICES 50 SOUTH BERETANA STREET SUITE C2008 HONOLULU, HAWAII 96813 DATE 11/11/89 001002F	STATE OF HAWAII COST RECOVERY SURVEY 11-0031-001-001 STATE OF HAWAII ACCOUNTING AND GENERAL SERVICES HAWAII STATE CAPITOL BUILDING

Dept. of Acc. & Gen. Services
11-0031

FACILITY : 001 - State Capital Building
BUILDING : 001 - State Capital
Inspection Dates: 02/07/89 to 00/00/00

Inspected By: Steve Bryant
Certification #: HK80315 St: KS
State Cert #: St:
Gross Square Ft: 326,000

*** INSPECTION RESULTS UNIFIED SAMPLING AREA NUMBER - 01 ***

SYSTEM: Chilled Water LOCATION: TYPE OF MATERIAL: MJP on Pipe Covering
Basement

DAMAGE CATEGORY: REASON for DAMAGE CATEGORY: POTENTIAL FOR DISTURBANCE: SAMPLE# %ASB
Damaged or significantly The material has been damaged by Moderate 59 10
damaged thermal system water and contact and is in fair 60 7
insulating ACM. condition. 61 8

MATERIAL QUANTITIES	REMOVAL COST	REPLACEMENT COSTS	TOTAL COSTS
180 6 In. O. D.	\$7,726	\$4,538	\$12,264
20 8 In. O. D.	\$1,068	\$628	\$1,696
50 12 In. O. D.	\$4,209	\$2,631	\$6,840
		AREA TOTAL	\$20,800

-----MANAGEMENT PLAN RECOMMENDATION-----

RECOMMENDED RESPONSE ACTION: PRIORITY: PREVENTIVE MEASURES:
Repair and O&M 2 See Part I and O&M Code: OMA

STATE RESPONSE:
ACTION ELECTION:

STATE AGENCY COMMENTS:

*** INSPECTION RESULTS UNIFIED SAMPLING AREA NUMBER - 02 ***

SYSTEM: Chilled Water LOCATION: TYPE OF MATERIAL: Pipe Covering
Basement

DAMAGE CATEGORY: REASON for DAMAGE CATEGORY: POTENTIAL FOR DISTURBANCE: SAMPLE# %ASB
Damaged or significantly The material has suffered some Moderate 62 10
damaged thermal system water damage, has undergone a 63 20
insulating ACM. noticeable degree of contact 64 5
damage, and has been damaged during
previous repair work but is in
fair condition.

Dept. of Acc. & Gen. Services
11-0031

FACILITY : 001 - State Capital Building
BUILDING : 001 - State Capital
Inspection Dates: 02/07/89 to 00/00/00

Inspected By: Steve Bryant
Certification #: HK80315 St: KS
State Cert #: St:
Gross Square Ft: 326,000

MATERIAL QUANTITIES	REMOVAL COST	REPLACEMENT COSTS	TOTAL COSTS
250 Ft. 6 In. O.D.	\$3,600	\$2,250	\$5,850
		AREA TOTAL	\$5,850

-----MANAGEMENT PLAN RECOMMENDATION-----

RECOMMENDED RESPONSE ACTION:
Repair and O&M

PRIORITY:
2

PREVENTIVE MEASURES:
See Part I and O&M Code: OMA

STATE RESPONSE:
ACTION ELECTION:

STATE AGENCY COMMENTS:

* * * INSPECTION RESULTS UNIFIED SAMPLING AREA NUMBER - 03 * * *

SYSTEM: Surfacing Mat.

LOCATION:
All Floors in Building

TYPE OF MATERIAL: Fireproofing

DAMAGE CATEGORY:
Significantly Damaged Friable
Surfacing ACM.

REASON for DAMAGE CATEGORY:
The material has been damaged by
previous renovations or
constructions and has suffered
damage from various other sources.

POTENTIAL FOR DISTURBANCE:	SAMPLE#	%ASB
Moderate	03	12
	04	10
	05	14
	06	11
	07	8
	08	12
	09	15
	10	10
	11	12
	12	11
	13	14
	14	10
	15	11
	16	14
	17	9
	18	11
	19	13
	20	10
	21	10
	22	12
	23	8
	24	11
	25	10
	26	13
	27	9
	28	12
	29	11
	30	10
	31	8

Dept. of Acc. & Gen. Services
11-0031

FACILITY : 001 - State Capital Building
BUILDING : 001 - State Capital
Inspection Dates: 02/07/89 to 00/00/00

Inspected By: Steve Bryant
Certification #: HK80315 St: KS
State Cert #: St:
Gross Square Ft: 326,000

Moderate	32	12
	33	14
	34	10
	35	9
	65	10
	66	8
	67	15
	68	10
	69	12
	70	11
	71	15
	72	12
	73	10
	74	13

MATERIAL QUANTITIES	REMOVAL COST	REPLACEMENT COSTS	TOTAL COSTS
190000 Square Feet	\$2,718,900	\$638,400	\$3,357,300
		AREA TOTAL	\$3,357,300

-----MANAGEMENT PLAN RECOMMENDATION-----

RECOMMENDED RESPONSE ACTION:
Gross Removal

PRIORITY:
1

PREVENTIVE MEASURES:
See Part I and O&M Code: OMC

STATE RESPONSE:
ACTION ELECTION:

STATE AGENCY COMMENTS:

* * * INSPECTION RESULTS UNIFIED SAMPLING AREA NUMBER - 04 * * *

SYSTEM: Ceiling Matl.

LOCATION:
All Floors in Building

TYPE OF MATERIAL: Acoustical Tile (1x1)

DAMAGE CATEGORY:
N/A

REASON for DAMAGE CATEGORY:
N/A

POTENTIAL FOR DISTURBANCE:
N/A

SAMPLE#	%ASB
75	0
76	0
77	0

DAG4
078289

Dept. of Acc. & Gen. Services
11-0031

FACILITY : 001 - State Capital Building
BUILDING : 001 - State Capital
Inspection Dates: 02/07/89 to 00/00/00

Inspected By: Steve Bryant
Certification #: HK80315 St: KS
State Cert #: St:
Gross Square Ft: 326,000

MATERIAL QUANTITIES	REMOVAL COST	REPLACEMENT COSTS	TOTAL COSTS
4000 Square Feet			
AREA TOTAL			\$0

-----MANAGEMENT PLAN RECOMMENDATION-----
 RECOMMENDED RESPONSE ACTION: N/A PRIORITY: 0 PREVENTIVE MEASURES: See Part I and O&M Code:

STATE RESPONSE:
ACTION ELECTION:

STATE AGENCY COMMENTS:

* * * INSPECTION RESULTS UNIFIED SAMPLING AREA NUMBER - 05 * * *

SYSTEM: Ceiling Matl. LOCATION: All Floors in Building TYPE OF MATERIAL: Drop or Lay-in Panel

DAMAGE CATEGORY: N/A REASON for DAMAGE CATEGORY: N/A POTENTIAL FOR DISTURBANCE: N/A

SAMPLE#	%ASB
78	0
79	0
80	0

MATERIAL QUANTITIES	REMOVAL COST	REPLACEMENT COSTS	TOTAL COSTS
4000 Square Feet			
AREA TOTAL			\$0

-----MANAGEMENT PLAN RECOMMENDATION-----
 RECOMMENDED RESPONSE ACTION: N/A PRIORITY: 0 PREVENTIVE MEASURES: See Part I and O&M Code:

STATE RESPONSE:
ACTION ELECTION:

STATE AGENCY COMMENTS:

DAG4
078290

Dept. of Acc. & Gen. Services
11-0031

FACILITY : 001 - State Capital Building
BUILDING : 001 - State Capital
Inspection Dates: 02/07/89 to 00/00/00

Inspected By: Steve Bryant
Certification #: HK80315 St: KS
State Cert #: St:
Gross Square Ft: 326,000

*** INSPECTION RESULTS UNIFIED SAMPLING AREA NUMBER - 06 ***

SYSTEM: Floor Matl. LOCATION: All Floors in Building TYPE OF MATERIAL: Vinyl Floor Tile

DAMAGE CATEGORY: ACBM with Potential for Damage REASON for DAMAGE CATEGORY: The material is observed to be in good condition. POTENTIAL FOR DISTURBANCE: Slight SAMPLE# 81 %ASB 6

MATERIAL QUANTITIES	REMOVAL COST	REPLACEMENT COSTS	TOTAL COSTS
3200 Square Feet	\$11,968	\$9,088	\$21,056
		AREA TOTAL	\$21,056

---MANAGEMENT PLAN RECOMMENDATION---

RECOMMENDED RESPONSE ACTION:
O&M Maintain/Monitor

PRIORITY:
3

PREVENTIVE MEASURES:
See Part I and O&M Code: OMI, OMZ

STATE RESPONSE:
ACTION ELECTION:

STATE AGENCY COMMENTS:

*** INSPECTION RESULTS UNIFIED SAMPLING AREA NUMBER - 07 ***

SYSTEM: Surfacing Mat. LOCATION: All Floors in Building TYPE OF MATERIAL: Brown or Scratch Coat

DAMAGE CATEGORY: N/A REASON for DAMAGE CATEGORY: N/A POTENTIAL FOR DISTURBANCE: N/A SAMPLE# 82 %ASB 0
83 0
84 0

Dept. of Acc. & Gen. Services
11-0031

FACILITY : 001 - State Capital Building
BUILDING : 001 - State Capital
Inspection Dates: 02/07/89 to 00/00/00

Inspected By: Steve Bryant
Certification #: HK80315 St: KS
State Cert #: St:
Gross Square Ft: 326,000

MATERIAL QUANTITIES	REMOVAL COST	REPLACEMENT COSTS	TOTAL COSTS
120000 Square Feet			
AREA TOTAL			\$0

-----MANAGEMENT PLAN RECOMMENDATION-----

RECOMMENDED RESPONSE ACTION:
N/A

PRIORITY:
0

PREVENTIVE MEASURES:
See Part I and O&M Code:

STATE RESPONSE:
ACTION ELECTION:

STATE AGENCY COMMENTS:

* * * INSPECTION RESULTS UNIFIED SAMPLING AREA NUMBER - 08 * * *

SYSTEM: Surfacing Mat.

LOCATION:
All Floors in Building

TYPE OF MATERIAL: Acoustical Plaster

DAMAGE CATEGORY:
Significantly Damaged Friable
Surfacing ACM.

REASON for DAMAGE CATEGORY:
The material is observed to be in
fair condition because it has been
damaged by age, water, contact,
and repair work.

POTENTIAL FOR DISTURBANCE:
Moderate

SAMPLE#	%ASB
36	12
37	10
38	10
39	14
40	13
41	11
42	9
43	12
44	11
45	13
46	14
47	12
48	9
49	10
50	10
51	12
52	9
53	13
54	10
85	10
86	10
87	12
88	10
89	10
90	11
91	8
92	10
93	12
94	14

DAG4
078292

Dept. of Acc. & Gen. Services
11-0031

FACILITY : 001 - State Capital Building
BUILDING : 001 - State Capital
Inspection Dates: 02/07/89 to 00/00/00

Inspected By: Steve Bryant
Certification #: HK80315 St: KS
State Cert #: St:
Gross Square Ft: 326,000

MATERIAL QUANTITIES	REMOVAL COST	REPLACEMENT COSTS	TOTAL COSTS
120000 Square Feet	\$1,486,800	\$288,000	\$1,774,800
		AREA TOTAL	\$1,774,800

-MANAGEMENT PLAN RECOMMENDATION-

RECOMMENDED RESPONSE ACTION:
Gross Removal

PRIORITY:
1

PREVENTIVE MEASURES:
See Part I and O&M Code: OMD

STATE RESPONSE:
ACTION ELECTION:

STATE AGENCY COMMENTS:

*** INSPECTION RESULTS UNIFIED SAMPLING AREA NUMBER - 09 ***

SYSTEM: Other

LOCATION:
All Floors in Building

TYPE OF MATERIAL: Other

DAMAGE CATEGORY:
ACEM with Potential for Damage

REASON for DAMAGE CATEGORY:
The material is observed to be in good condition.

POTENTIAL FOR DISTURBANCE:	SAMPLE#	%ASB
Slight	95	12
	96	15
	97	10

MATERIAL QUANTITIES	REMOVAL COST	REPLACEMENT COSTS	TOTAL COSTS
500 Square Feet	\$5,670	\$1,420	\$7,090
		AREA TOTAL	\$7,090

-MANAGEMENT PLAN RECOMMENDATION-

RECOMMENDED RESPONSE ACTION:
O&M Maintain/Monitor

PRIORITY:
3

PREVENTIVE MEASURES:
See Part I and O&M Code: OMZ

STATE RESPONSE:
ACTION ELECTION:

STATE AGENCY COMMENTS:

DAG4
078293

Dept. of Acc. & Gen. Services
11-0031

FACILITY : 001 - State Capital Building
BUILDING : 001 - State Capital
Inspection Dates: 02/07/89 to 00/00/00

Inspected By: Steve Bryant
Certification #: HK80315 St: KS
State Cert #: St:
Gross Square Ft: 326,000

*** INSPECTION RESULTS UNIFIED SAMPLING AREA NUMBER - 10 ***

SYSTEM: Surfacing Mat.

LOCATION:
All Floors in Building

TYPE OF MATERIAL: Hardwall/Ceiling Plaster

DAMAGE CATEGORY:
Significantly Damaged Friable
Surfacing ACM.

REASON for DAMAGE CATEGORY:
The material has been damaged by
previous renovations or
constructions and has suffered
damage from various other sources.

POTENTIAL FOR DISTURBANCE: Moderate
SAMPLE# %ASB
35 3
36 2
37 2

MATERIAL QUANTITIES	REMOVAL COST	REPLACEMENT COSTS	TOTAL COSTS
9000 Square Feet	\$92,070	\$10,800	\$102,870
		AREA TOTAL	\$102,870

-----MANAGEMENT PLAN RECOMMENDATION-----

RECOMMENDED RESPONSE ACTION:
Gross Removal

PRIORITY:
1

PREVENTIVE MEASURES:
See Part I and O&M Code: OMD

STATE RESPONSE:
ACTION ELECTION:

STATE AGENCY COMMENTS:

LABORATORY:
 HALL-KIMBRELL ENVIRONMENTAL SERVICES
 4840 W. 15th Street
 Lawrence, Kansas 66044

PETROGRAPHIC ANALYSIS FOR ASBESTOS
 Dept. of Acc. & Gen. Services
 11-0031

LAB SUPERVISOR: Thomas Bergin

USGROUP	SAM#	CONT/ASB	A S B E S T O S			O T H E R			M A T E R I A L S			TOT%	DATE	MICROSCOPIST						
			CHRY	AMOS	CROC	ANTH	ACT/TRM	%ASB	MIN	WOOD	VERM				PUMC	BIND	OTH1	OTH2		
== USA # 01 ==																				
11003100100101	59	Y	10%	0%	0%	0%	0%	0%	0%	0%	60%	0%	0%	0%	30%	0%	0%	100%	04/21/89	R. Kissling
11003100100101	60	Y	7%	0%	0%	0%	0%	0%	0%	7%	63%	0%	0%	0%	30%	0%	0%	100%	04/21/89	R. Kissling
11003100100101	61	Y	8%	0%	0%	0%	0%	0%	0%	8%	55%	0%	0%	0%	37%	0%	0%	100%	04/21/89	R. Kissling
== USA # 02 ==																				
11003100100102	62	Y	10%	0%	0%	0%	0%	0%	0%	10%	35%	0%	0%	0%	15% SM	40%	0%	100%	04/21/89	R. Kissling
11003100100102	63	Y	20%	0%	0%	0%	0%	0%	0%	20%	60%	0%	0%	0%	20%	0%	0%	100%	04/21/89	R. Kissling
11003100100102	64	Y	5%	0%	0%	0%	0%	0%	0%	5%	15%	70%	0%	0%	10%	0%	0%	100%	04/21/89	R. Kissling
== USA # 03 ==																				
11003100100103	03	Y	12%	0%	0%	0%	0%	0%	0%	12%	0%	0%	0%	0%	28% GM	5%	0%	100%	11/07/89	R. Kissling
11003100100103	04	Y	10%	0%	0%	0%	0%	0%	0%	10%	0%	0%	0%	0%	20% GM	5%	0%	100%	11/07/89	R. Kissling
11003100100103	05	Y	14%	0%	0%	0%	0%	0%	0%	14%	0%	0%	0%	0%	25% GM	6%	0%	100%	11/07/89	R. Kissling
11003100100103	06	Y	11%	0%	0%	0%	0%	0%	0%	11%	0%	0%	0%	0%	20% GM	4%	0%	100%	11/07/89	R. Kissling
11003100100103	07	Y	8%	0%	0%	0%	0%	0%	0%	8%	0%	0%	0%	0%	22% GM	5%	0%	100%	11/07/89	R. Kissling
11003100100103	08	Y	12%	0%	0%	0%	0%	0%	0%	12%	0%	0%	0%	0%	22% GM	6%	0%	100%	11/07/89	R. Kissling
11003100100103	09	Y	15%	0%	0%	0%	0%	0%	0%	15%	0%	0%	0%	0%	20% GM	3%	0%	100%	11/07/89	R. Kissling
11003100100103	10	Y	10%	0%	0%	0%	0%	0%	0%	10%	0%	0%	0%	0%	23% GM	5%	0%	100%	11/07/89	R. Kissling
11003100100103	11	Y	12%	0%	0%	0%	0%	0%	0%	12%	0%	0%	0%	0%	24% GM	4%	0%	100%	11/07/89	R. Kissling
11003100100103	12	Y	11%	0%	0%	0%	0%	0%	0%	11%	0%	0%	0%	0%	20% GM	4%	0%	100%	11/07/89	R. Kissling
11003100100103	13	Y	14%	0%	0%	0%	0%	0%	0%	14%	0%	0%	0%	0%	20% GM	6%	0%	100%	11/07/89	R. Kissling
11003100100103	14	Y	10%	0%	0%	0%	0%	0%	0%	10%	0%	0%	0%	0%	20% GM	10%	0%	100%	11/07/89	R. Kissling
11003100100103	15	Y	11%	0%	0%	0%	0%	0%	0%	11%	0%	0%	0%	0%	20% GM	4%	0%	100%	11/07/89	R. Kissling
11003100100103	16	Y	14%	0%	0%	0%	0%	0%	0%	14%	0%	0%	0%	0%	21% GM	5%	0%	100%	11/07/89	R. Kissling

DAG4
 078295

LABORATORY:
 HALL-KIMBELL ENVIRONMENTAL SERVICES
 4840 W. 15th Street
 Lawrence, Kansas 66044

PETROGRAPHIC ANALYSIS FOR ASBESTOS
 Dept. of Acc. & Gen. Services
 11-0031

LAB SUPERVISOR: Thomas Bergin

USGROUP	SAM#	CONT	ASB	CHRY	A S B E S T O S					ACT/TRM	%ASB	MIN	O T H E R			M A T E R I A L S			TOT%	DATE	MICROSCOPIST	
					AMOS	CROC	ANTH							WOOD	VERM	PUMC	BIND	OTH1				OTH2
11003100100103	17	Y	Y	9%	0%	0%	0%	0%	0%	0%	0%	0%	0%	0%	60%	0%	25% GM	6%	0%	100%	11/07/89	R. Kissling
11003100100103	18	Y	Y	11%	0%	0%	0%	0%	0%	0%	0%	0%	0%	0%	62%	0%	23% GM	4%	0%	100%	11/07/89	R. Kissling
11003100100103	19	Y	Y	13%	0%	0%	0%	0%	0%	0%	0%	0%	0%	0%	60%	0%	22% GM	5%	0%	100%	11/07/89	R. Kissling
11003100100103	20	Y	Y	10%	0%	0%	0%	0%	0%	0%	0%	0%	0%	0%	63%	0%	22% GM	5%	0%	100%	11/07/89	R. Kissling
11003100100103	21	Y	Y	10%	0%	0%	0%	0%	0%	0%	0%	0%	0%	0%	60%	0%	25% GM	5%	0%	100%	11/07/89	R. Kissling
11003100100103	22	Y	Y	12%	0%	0%	0%	0%	0%	0%	0%	0%	0%	0%	60%	0%	25% GM	3%	0%	100%	11/07/89	R. Kissling
11003100100103	23	Y	Y	8%	0%	0%	0%	0%	0%	0%	0%	0%	0%	0%	66%	0%	22% GM	4%	0%	100%	11/07/89	R. Kissling
11003100100103	24	Y	Y	11%	0%	0%	0%	0%	0%	0%	0%	0%	0%	0%	65%	0%	20% GM	4%	0%	100%	11/07/89	R. Kissling
11003100100103	25	Y	Y	10%	0%	0%	0%	0%	0%	0%	0%	0%	0%	0%	60%	0%	23% GM	7%	0%	100%	11/07/89	R. Kissling
11003100100103	26	Y	Y	13%	0%	0%	0%	0%	0%	0%	0%	0%	0%	0%	64%	0%	20% GM	3%	0%	100%	11/07/89	R. Kissling
11003100100103	27	Y	Y	9%	0%	0%	0%	0%	0%	0%	0%	0%	0%	0%	59%	0%	28% GM	4%	0%	100%	11/07/89	R. Kissling
11003100100103	28	Y	Y	12%	0%	0%	0%	0%	0%	0%	0%	0%	0%	0%	60%	0%	25% GM	3%	0%	100%	11/07/89	R. Kissling
11003100100103	29	Y	Y	11%	0%	0%	0%	0%	0%	0%	0%	0%	0%	0%	58%	0%	25% GM	6%	0%	100%	11/07/89	R. Kissling
11003100100103	30	Y	Y	10%	0%	0%	0%	0%	0%	0%	0%	0%	0%	0%	65%	0%	20% GM	5%	0%	100%	11/07/89	R. Kissling
11003100100103	31	Y	Y	8%	0%	0%	0%	0%	0%	0%	0%	0%	0%	0%	60%	0%	26% GM	6%	0%	100%	11/07/89	R. Kissling
11003100100103	32	Y	Y	12%	0%	0%	0%	0%	0%	0%	0%	0%	0%	0%	60%	0%	23% GM	5%	0%	100%	11/07/89	R. Kissling
11003100100103	33	Y	Y	14%	0%	0%	0%	0%	0%	0%	0%	0%	0%	0%	60%	0%	20% GM	6%	0%	100%	11/07/89	R. Kissling
11003100100103	34	Y	Y	10%	0%	0%	0%	0%	0%	0%	0%	0%	0%	0%	64%	0%	21% GM	5%	0%	100%	11/07/89	R. Kissling
11003100100103	35	Y	Y	9%	0%	0%	0%	0%	0%	0%	0%	0%	0%	0%	66%	0%	0% GY	25%	0%	100%	10/13/89	R. Kissling
11003100100103	65	Y	Y	10%	0%	0%	0%	0%	0%	0%	0%	0%	0%	0%	70%	0%	0% GY	20%	0%	100%	10/13/89	R. Kissling
11003100100103	66	Y	Y	8%	0%	0%	0%	0%	0%	0%	0%	0%	0%	0%	67%	0%	0% GY	25%	0%	100%	10/13/89	R. Kissling
11003100100103	67	Y	Y	15%	0%	0%	0%	0%	0%	0%	0%	0%	0%	0%	70%	0%	0% GY	15%	0%	100%	10/13/89	R. Kissling

DAG4
078296

LABORATORY:
 HALL-KIMBRELL ENVIRONMENTAL SERVICES
 4840 W. 15th Street
 Lawrence, Kansas 66044

PETROGRAPHIC ANALYSIS FOR ASBESTOS
 Dept. of Acc. & Gen. Services
 11-0031

LAB SUPERVISOR: Thomas Bergin

USGROUP	SAM#	CONT/ASB	CHRY	A S B E S T O S				O T H E R				M A T E R I A L S				DATE	MICROSCOPIST			
				AMOS	CROC	ANTH	ACT/TRM	%ASB	MIN	WOOD	VERM	PUMC	BIND	OTH1	OTH2			TOT%		
11003100100103	68	Y	10%	0%	0%	0%	0%	10%	0%	0%	0%	0%	0%	0%	0%	0%	100%	10/13/89	R. Kissling	
11003100100103	69	Y	12%	0%	0%	0%	0%	12%	0%	0%	0%	0%	0%	0%	0%	0%	100%	10/13/89	R. Kissling	
11003100100103	70	Y	11%	0%	0%	0%	0%	11%	0%	0%	0%	0%	0%	0%	0%	0%	100%	10/13/89	R. Kissling	
11003100100103	71	Y	15%	0%	0%	0%	0%	15%	0%	0%	0%	0%	0%	0%	0%	0%	100%	10/13/89	R. Kissling	
11003100100103	72	Y	12%	0%	0%	0%	0%	12%	0%	0%	0%	0%	0%	0%	0%	0%	100%	10/13/89	R. Kissling	
11003100100103	73	Y	10%	0%	0%	0%	0%	10%	0%	0%	0%	0%	0%	0%	0%	0%	100%	10/13/89	R. Kissling	
11003100100103	74	Y	13%	0%	0%	0%	0%	13%	0%	0%	0%	0%	0%	0%	0%	0%	100%	10/13/89	R. Kissling	
= USA # 04																				
11003100100104	75	Y	0%	0%	0%	0%	0%	0%	80%	10%	0%	0%	0%	0%	0%	0%	100%	04/21/89	R. Kissling	
11003100100104	76	Y	0%	0%	0%	0%	0%	0%	75%	15%	0%	0%	0%	0%	0%	0%	100%	04/21/89	R. Kissling	
11003100100104	77	Y	0%	0%	0%	0%	0%	0%	78%	12%	0%	0%	0%	0%	0%	0%	100%	04/21/89	R. Kissling	
= USA # 05																				
11003100100105	78	Y	0%	0%	0%	0%	0%	0%	40%	40%	0%	15%	5%	0%	0%	0%	100%	04/21/89	R. Kissling	
11003100100105	79	Y	0%	0%	0%	0%	0%	0%	45%	35%	0%	15%	5%	0%	0%	0%	100%	04/21/89	R. Kissling	
11003100100105	80	Y	0%	0%	0%	0%	0%	0%	40%	35%	0%	20%	5%	0%	0%	0%	100%	04/21/89	R. Kissling	
= USA # 06																				
11003100100106	81	N	6%	0%	0%	0%	0%	6%	0%	0%	0%	0%	29%	CA	60%	GM	5%	100%	04/21/89	R. Kissling
= USA # 07																				
11003100100107	82	Y	0%	0%	0%	0%	0%	0%	0%	0%	30%	0%	0%	CA	35%	GY	35%	100%	04/21/89	R. Kissling
11003100100107	83	Y	0%	0%	0%	0%	0%	0%	0%	0%	35%	0%	0%	CA	30%	GY	35%	100%	04/21/89	R. Kissling
11003100100107	84	Y	0%	0%	0%	0%	0%	0%	0%	0%	25%	0%	0%	CA	40%	GY	35%	100%	04/21/89	R. Kissling
= USA # 08																				
11003100100108	36	Y	12%	0%	0%	0%	0%	12%	0%	0%	51%	13%	12%	GM	12%	0%	100%	10/13/89	R. Kissling	
11003100100108	37	Y	10%	0%	0%	0%	0%	10%	0%	0%	52%	12%	16%	GM	10%	0%	100%	10/13/89	R. Kissling	

DAG4
078297

LABORATORY:
 HALL-KIMBRELL ENVIRONMENTAL SERVICES
 4840 W. 15th Street
 Lawrence, Kansas 66044

PETROGRAPHIC ANALYSIS FOR ASBESTOS
 Dept. of Acc. & Gen. Services
 11-0031

LAB SUPERVISOR: Thomas Bergin

USGROUP	SAM#	CONT/ASB	CHRY	A S B E S T O S				O T H E R				M A T E R I A L S				DATE	TOT%	MICROSCOPIST	
				AMOS	CROC	ANTH	ACT/TRM	%ASB	MIN	WOOD	VERM	PUMC	BIND	OTH1	OTH2				
11003100100108	38	Y	10%	0%	0%	0%	0%	0%	0%	0%	0%	0%	0%	0%	0%	0%	100%	10/13/89	R. Kissling
11003100100108	39	N	14%	0%	0%	0%	0%	0%	0%	0%	0%	0%	0%	0%	0%	0%	100%	10/13/89	R. Kissling
11003100100108	40	N	13%	0%	0%	0%	0%	0%	0%	0%	0%	0%	0%	0%	0%	0%	100%	10/13/89	R. Kissling
11003100100108	41	N	11%	0%	0%	0%	0%	0%	0%	0%	0%	0%	0%	0%	0%	0%	100%	10/13/89	R. Kissling
11003100100108	42	N	9%	0%	0%	0%	0%	0%	0%	0%	0%	0%	0%	0%	0%	0%	100%	10/13/89	R. Kissling
11003100100108	43	N	12%	0%	0%	0%	0%	0%	0%	0%	0%	0%	0%	0%	0%	0%	100%	10/13/89	R. Kissling
11003100100108	44	N	11%	0%	0%	0%	0%	0%	0%	0%	0%	0%	0%	0%	0%	0%	100%	10/13/89	R. Kissling
11003100100108	45	N	13%	0%	0%	0%	0%	0%	0%	0%	0%	0%	0%	0%	0%	0%	100%	10/13/89	R. Kissling
11003100100108	46	N	14%	0%	0%	0%	0%	0%	0%	0%	0%	0%	0%	0%	0%	0%	100%	10/13/89	R. Kissling
11003100100108	47	N	12%	0%	0%	0%	0%	0%	0%	0%	0%	0%	0%	0%	0%	0%	100%	10/13/89	R. Kissling
11003100100108	48	N	9%	0%	0%	0%	0%	0%	0%	0%	0%	0%	0%	0%	0%	0%	100%	10/13/89	R. Kissling
11003100100108	49	N	10%	0%	0%	0%	0%	0%	0%	0%	0%	0%	0%	0%	0%	0%	100%	10/13/89	R. Kissling
11003100100108	50	N	10%	0%	0%	0%	0%	0%	0%	0%	0%	0%	0%	0%	0%	0%	100%	10/13/89	R. Kissling
11003100100108	51	N	12%	0%	0%	0%	0%	0%	0%	0%	0%	0%	0%	0%	0%	0%	100%	10/13/89	R. Kissling
11003100100108	52	N	9%	0%	0%	0%	0%	0%	0%	0%	0%	0%	0%	0%	0%	0%	100%	10/13/89	R. Kissling
11003100100108	53	N	13%	0%	0%	0%	0%	0%	0%	0%	0%	0%	0%	0%	0%	0%	100%	10/13/89	R. Kissling
11003100100108	54	N	10%	0%	0%	0%	0%	0%	0%	0%	0%	0%	0%	0%	0%	0%	100%	10/13/89	R. Kissling
11003100100108	85	Y	10%	0%	0%	0%	0%	0%	0%	0%	0%	0%	0%	0%	0%	0%	100%	04/21/89	R. Kissling
11003100100108	86	Y	10%	0%	0%	0%	0%	0%	0%	0%	0%	0%	0%	0%	0%	0%	100%	04/21/89	R. Kissling
11003100100108	87	Y	12%	0%	0%	0%	0%	0%	0%	0%	0%	0%	0%	0%	0%	0%	100%	04/21/89	R. Kissling
11003100100108	88	Y	10%	0%	0%	0%	0%	0%	0%	0%	0%	0%	0%	0%	0%	0%	100%	04/21/89	R. Kissling
11003100100108	89	Y	10%	0%	0%	0%	0%	0%	0%	0%	0%	0%	0%	0%	0%	0%	100%	04/21/89	R. Kissling

DAG4
078298

LABORATORY:
 HALL-KIMBELL ENVIRONMENTAL SERVICES
 4840 W. 15th Street
 Lawrence, Kansas 66044

PETROGRAPHIC ANALYSIS FOR ASBESTOS
 Dept. of Acc. & Gen. Services
 11-0031

LAB SUPERVISOR: Thomas Bergin

USGROUP	SAM#	CONT/ASB	A S B E S T O S							O T H E R							TOT%	DATE	MICROSCOPIST							
			CHRY	AMOS	CROC	ANTH	ACT/TRM	%ASB	MIN	WOOD	VERM	PUMC	BIND	OTH1	OTH2											
111003100100108	90	Y	11%	0%	0%	0%	0%	0%	0%	0%	0%	0%	0%	0%	0%	0%	0%	0%	0%	0%	0%	0%	0%	04/21/89	R. Kissling	
111003100100108	91	Y	8%	0%	0%	0%	0%	0%	0%	0%	8%	0%	0%	0%	0%	0%	0%	0%	0%	0%	0%	0%	0%	0%	04/21/89	R. Kissling
111003100100108	92	Y	10%	0%	0%	0%	0%	0%	0%	0%	10%	0%	0%	0%	0%	0%	0%	0%	0%	0%	0%	0%	0%	0%	04/21/89	R. Kissling
111003100100108	93	Y	12%	0%	0%	0%	0%	0%	0%	0%	12%	0%	0%	0%	0%	0%	0%	0%	0%	0%	0%	0%	0%	0%	04/21/89	R. Kissling
111003100100108	94	Y	14%	0%	0%	0%	0%	0%	0%	0%	14%	0%	0%	0%	0%	0%	0%	0%	0%	0%	0%	0%	0%	0%	04/21/89	R. Kissling
== USA # 09 ==																										
111003100100109	95	Y	12%	0%	0%	0%	0%	0%	0%	0%	12%	0%	0%	0%	0%	0%	0%	0%	0%	0%	0%	0%	0%	0%	04/21/89	R. Kissling
111003100100109	96	Y	15%	0%	0%	0%	0%	0%	0%	0%	15%	0%	0%	0%	0%	0%	0%	0%	0%	0%	0%	0%	0%	0%	04/21/89	R. Kissling
111003100100109	97	Y	10%	0%	0%	0%	0%	0%	0%	0%	10%	0%	0%	0%	0%	0%	0%	0%	0%	0%	0%	0%	0%	0%	04/21/89	R. Kissling
== USA # 10 ==																										
111003100100110	35	Y	3%	0%	0%	0%	0%	0%	0%	0%	3%	0%	0%	0%	0%	0%	0%	0%	0%	0%	0%	0%	0%	0%	11/07/89	R. Kissling
111003100100110	36	Y	2%	0%	0%	0%	0%	0%	0%	0%	2%	0%	0%	0%	0%	0%	0%	0%	0%	0%	0%	0%	0%	0%	11/07/89	R. Kissling
111003100100110	37	Y	2%	0%	0%	0%	0%	0%	0%	0%	2%	0%	0%	0%	0%	0%	0%	0%	0%	0%	0%	0%	0%	0%	11/07/89	R. Kissling

DAG4
078299