

**D**

**C**

**C**

**C**

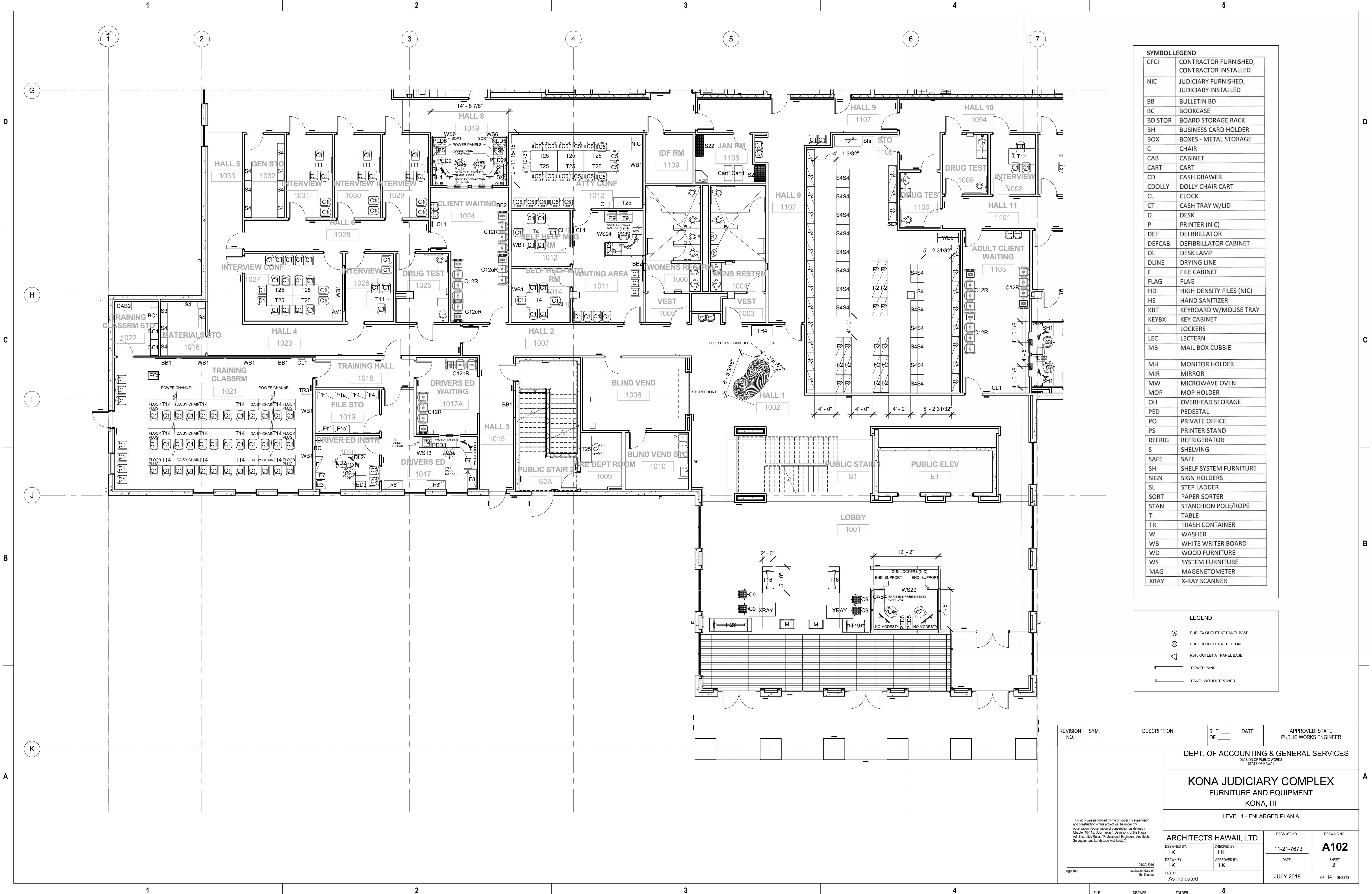
**B**



## NTS







SYMBOL LEGEND	
CFCI	CONTRACTOR FURNISHED, CONTRACTOR INSTALLED
NIC	JUDICIARY FURNISHED, JUDICIARY INSTALLED
BB	BULLETIN BD
BC	BOOKCASE
BD STOR	BOARD STORAGE RACK
BH	BUSINESS CARD HOLDER
BOX	BOXES - METAL STORAGE
C	CHAIR
CAB	CABINET
CART	CART
CD	CASH DRAWER
CDOLLY	DOLLY CHAIR CART
CL	CLOCK
CT	CASH TRAY W/LID
D	DESK
P	PRINTER (NIC)
DEF	DEFBRILLATOR
DEFCAB	DEFBRILLATOR CABINET
DL	DESK LAMP
DLINE	DRYING LINE
F	FILE CABINET
FLAG	FLAG
HD	HIGH DENSITY FILES (NIC)
HS	HAND SANITIZER
KBT	KEYBOARD W/MOUSE TRAY
KEYBX	KEY CABINET
L	LOCKERS
LEC	LECTERN
MB	MAIL BOX CUBBIE
MH	MONITOR HOLDER
MIR	MIRROR
MW	MICROWAVE OVEN
MOP	MOP HOLDER
OH	OVERHEAD STORAGE
PED	PEDESTAL
PO	PRIVATE OFFICE
PS	PRINTER STAND
REFRIG	REFRIGERATOR
S	SHELVING
SAFE	SAFE
SH	SHELF SYSTEM FURNITURE
SIGN	SIGN HOLDERS
SL	STEP LADDER
SORT	PAPER SORTER
STAN	STANCHION POLE/ROPE
T	TABLE
TR	TRASH CONTAINER
W	WASHER
WB	WHITE WRITER BOARD
WD	WOOD FURNITURE
WS	SYSTEM FURNITURE
MAG	MAGENETOMETER
XRAY	X-RAY SCANNER

LEGEND	
⊙	DUPLEX OUTLET AT PANEL BASE
⊖	DUPLEX OUTLET AT BELTLINE
◁	R44S OUTLET AT PANEL BASE
⎓	POWER PANEL
⎓	PANEL WITHOUT POWER

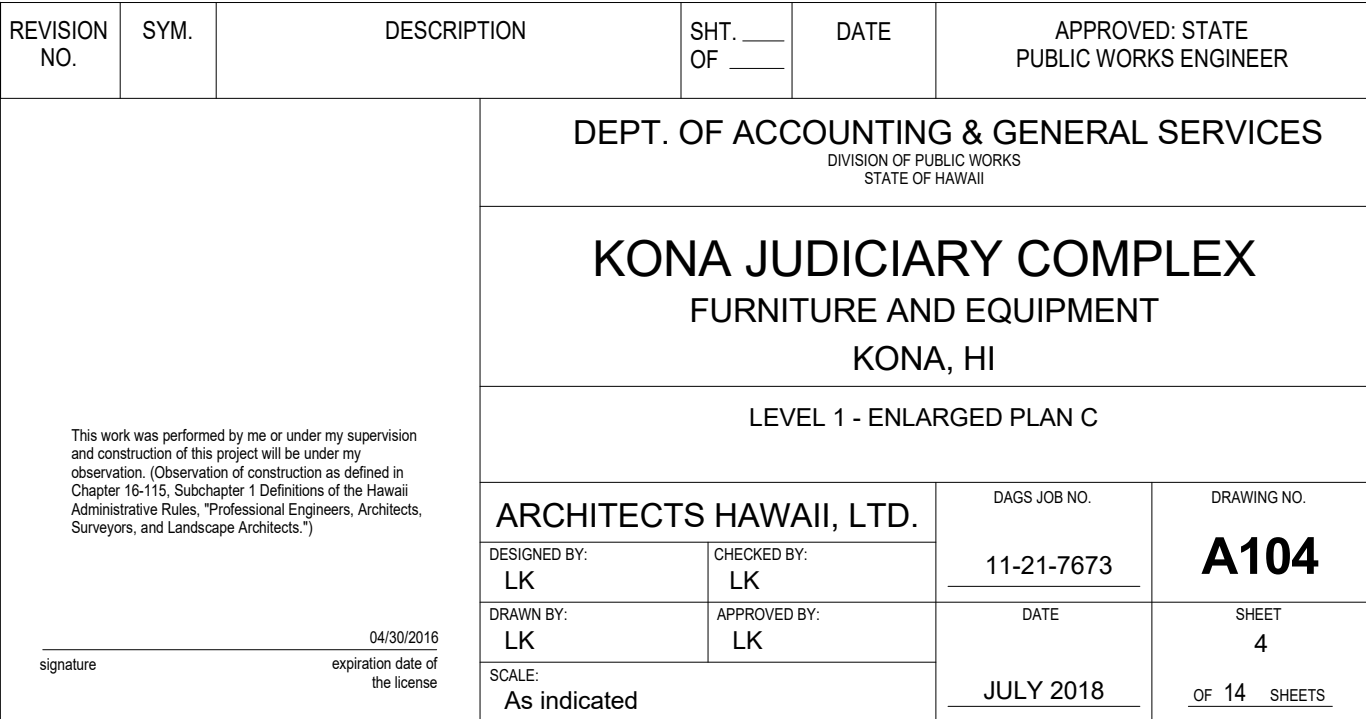
REVISION NO.	SYM.	DESCRIPTION	SHT. OF	DATE	APPROVED: STATE PUBLIC WORKS ENGINEER
DEPT. OF ACCOUNTING & GENERAL SERVICES DIVISION OF PUBLIC WORKS STATE OF HAWAII					
KONA JUDICIARY COMPLEX FURNITURE AND EQUIPMENT KONA, HI					
LEVEL 1 - ENLARGED PLAN A					
ARCHITECTS HAWAII, LTD.			DAGS JOB NO.	DRAWING NO.	
DESIGNED BY: LK	CHECKED BY: LK		11-21-7673	A102	
DRAWN BY: LK	APPROVED BY: LK		DATE	SHEET	
SCALE: As indicated			JULY 2018	2 OF 14 SHEETS	

This work was performed by me or under my supervision and construction of this project will be under my observation. (Observation of construction as defined in Chapter 16-115, Subchapter 1 Definitions of the Hawaii Administrative Rules. Professional Engineers, Architects, Surveyors, and Landscape Architects.)

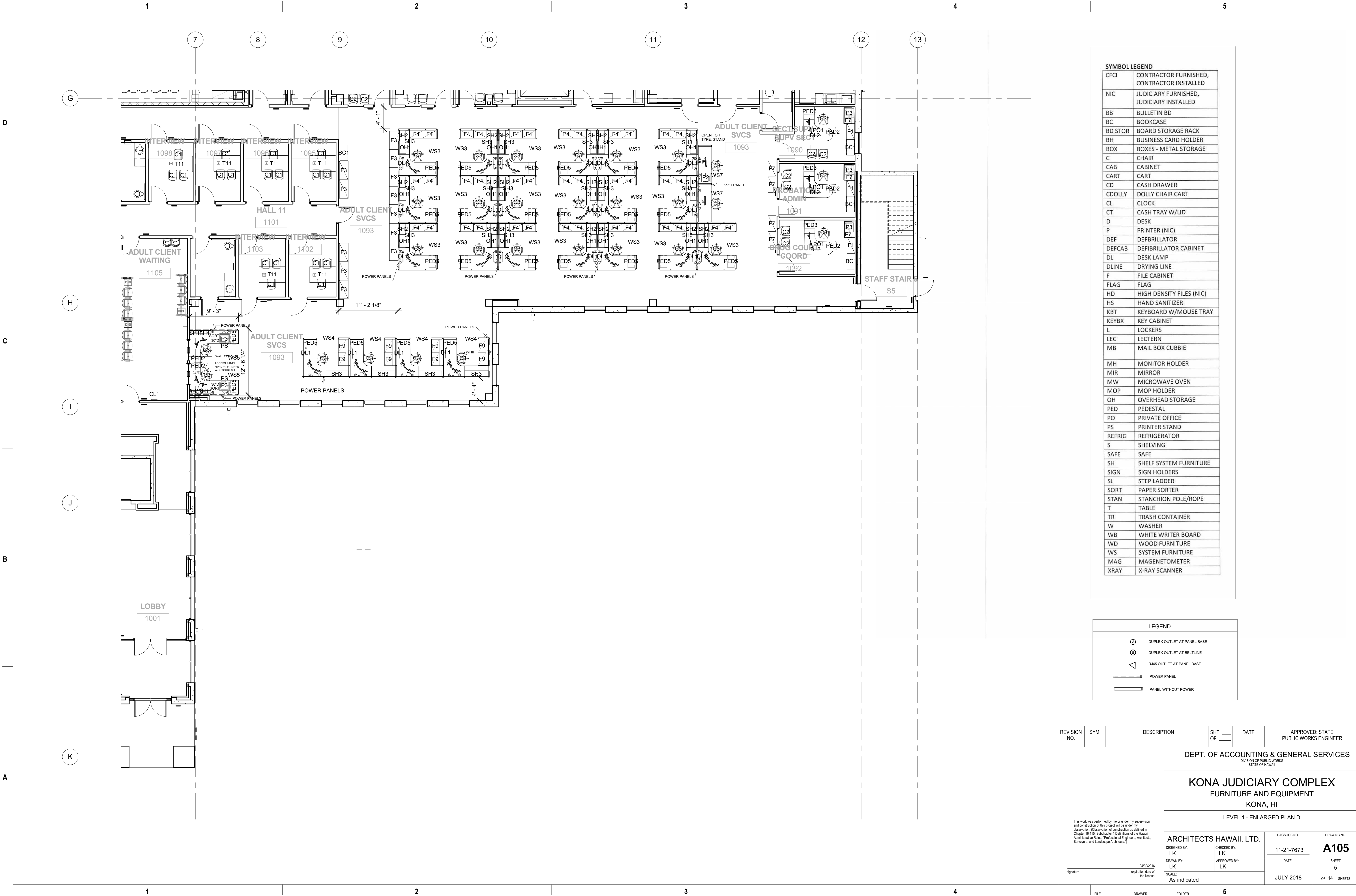
04/30/2018  
expiration date of the license

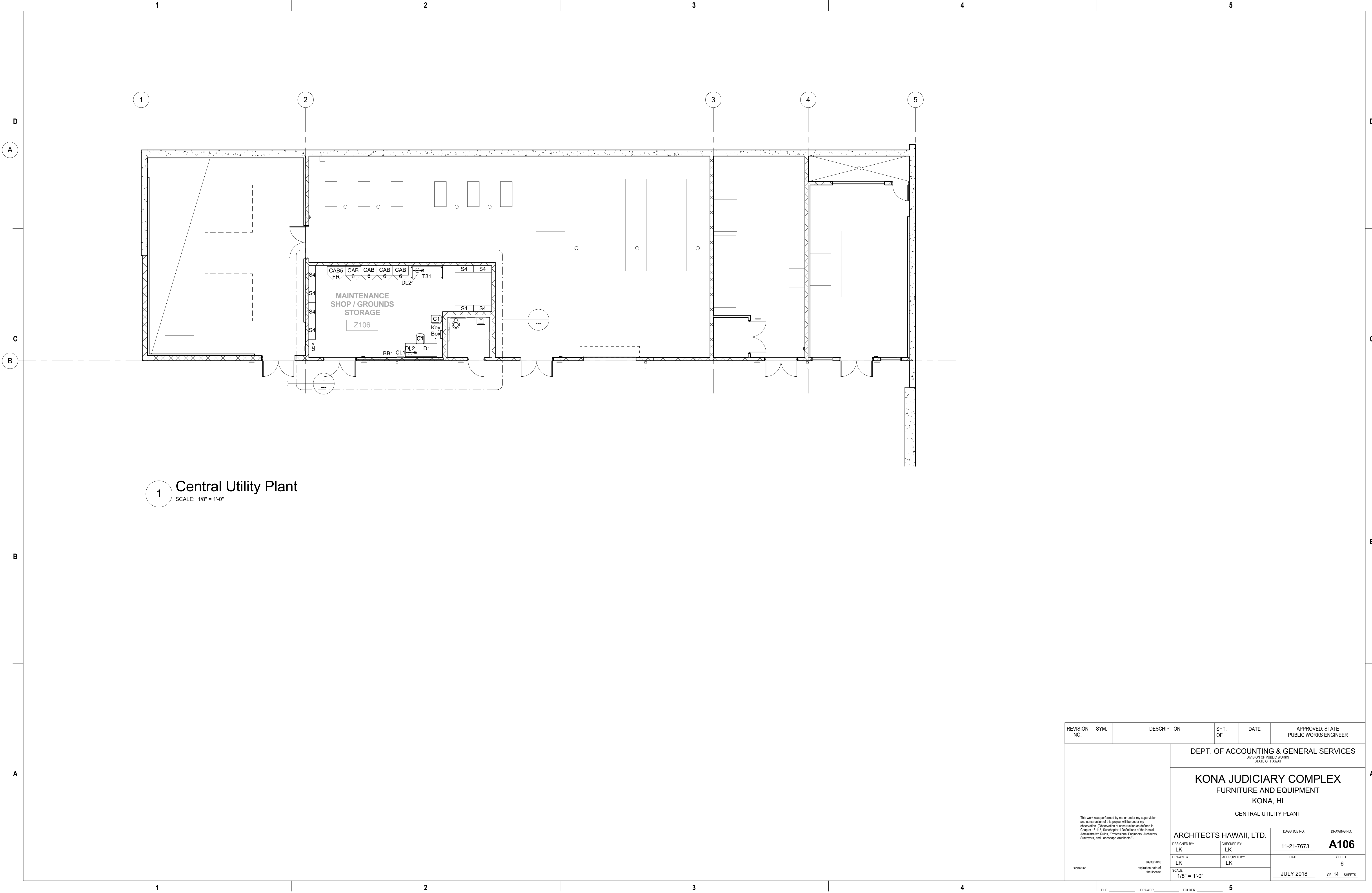
signature



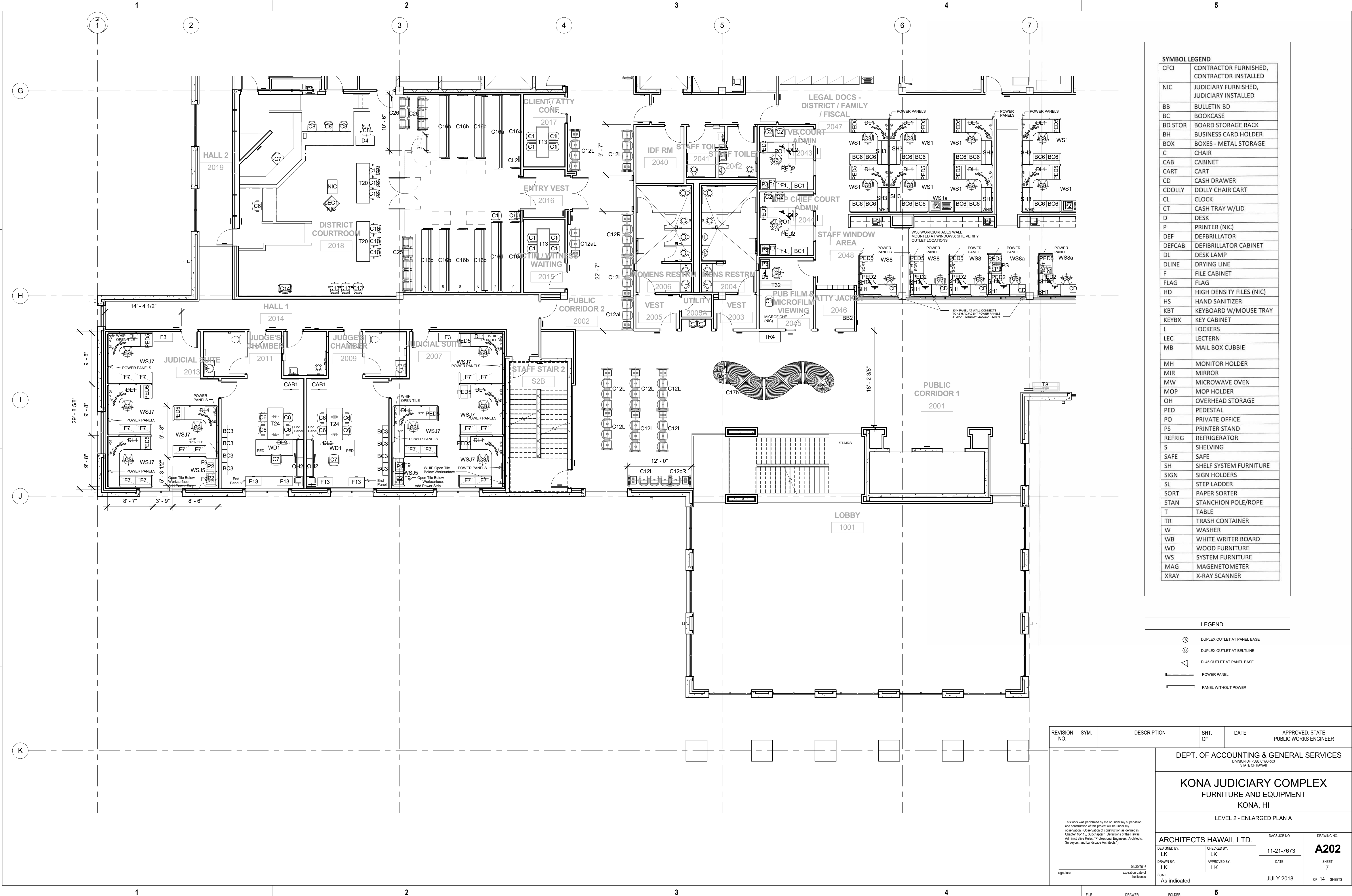








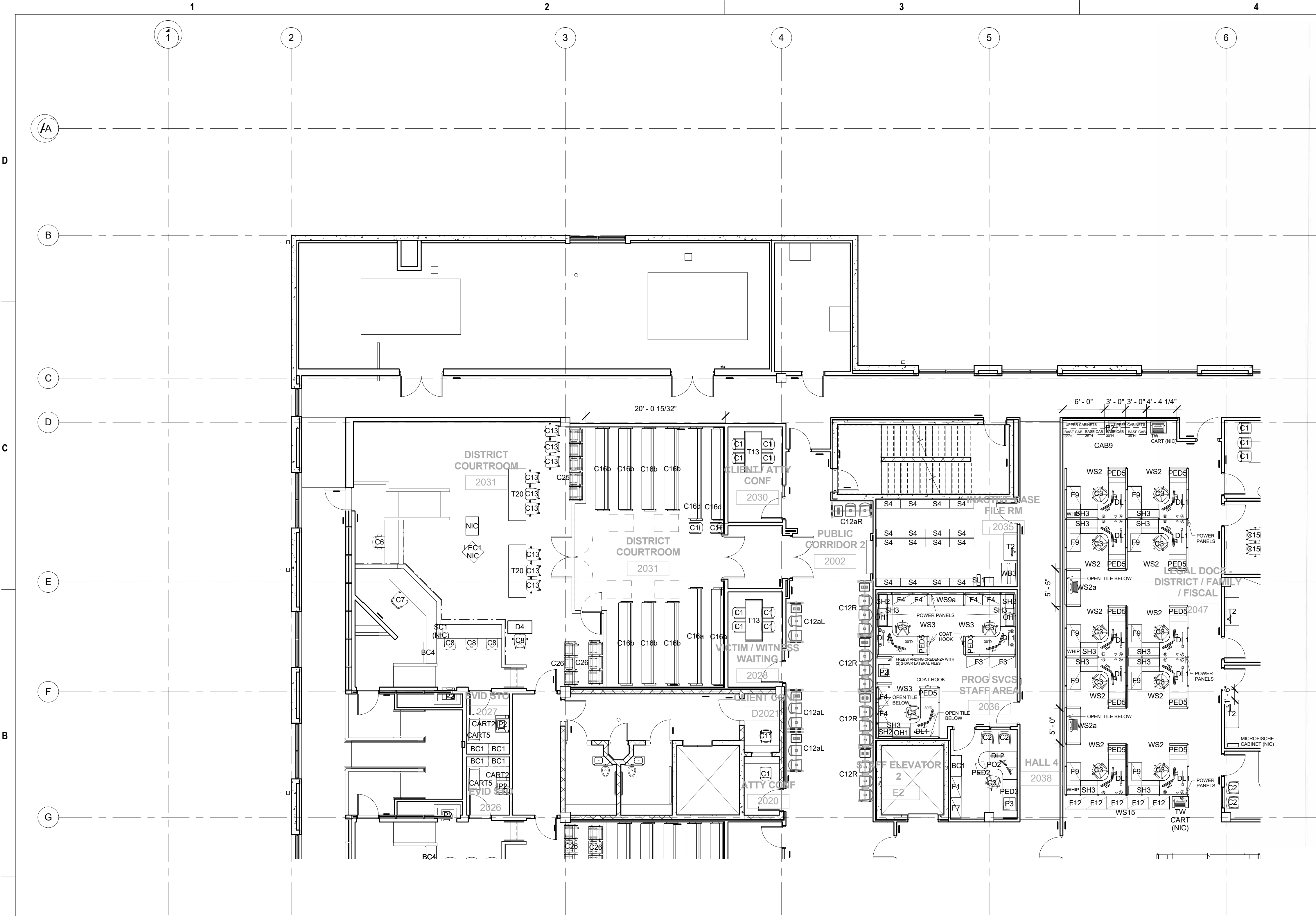




SYMBOL LEGEND	
CFCI	CONTRACTOR FURNISHED, CONTRACTOR INSTALLED
NIC	JUDICIARY FURNISHED, JUDICIARY INSTALLED
BB	BULLETIN BD
BC	BOOKCASE
BD STOR	BOARD STORAGE RACK
BH	BUSINESS CARD HOLDER
BOX	BOXES - METAL STORAGE
C	CHAIR
CAB	CABINET
CART	CART
CD	CASH DRAWER
CDOLLY	DOLLY CHAIR CART
CL	CLOCK
CT	CASH TRAY W/LID
D	DESK
P	PRINTER (NIC)
DEF	DEFBRILLATOR
DEFCAB	DEFIBRILLATOR CABINET
DL	DESK LAMP
DLINE	DRYING LINE
F	FILE CABINET
FLAG	FLAG
HD	HIGH DENSITY FILES (NIC)
HS	HAND SANITIZER
KBT	KEYBOARD W/MOUSE TRAY
KEYBX	KEY CABINET
L	LOCKERS
LEC	LECTERN
MB	MAIL BOX CUBBIE
MH	MONITOR HOLDER
MIR	MIRROR
MW	MICROWAVE OVEN
MOP	MOP HOLDER
OH	OVERHEAD STORAGE
PED	PEDESTAL
PO	PRIVATE OFFICE
PS	PRINTER STAND
REFRIG	REFRIGERATOR
S	SHELVING
SAFE	SAFE
SH	SHELF SYSTEM FURNITURE
SIGN	SIGN HOLDERS
SL	STEP LADDER
SORT	PAPER SORTER
STAN	STANCHION POLE/ROPE
T	TABLE
TR	TRASH CONTAINER
W	WASHER
WB	WHITE WRITER BOARD
WD	WOOD FURNITURE
WS	SYSTEM FURNITURE
MAG	MAGENETOMETER
XRAY	X-RAY SCANNER

LEGEND	
⊙	DUPLEX OUTLET AT PANEL BASE
⊖	DUPLEX OUTLET AT BELTLINE
△	RJ45 OUTLET AT PANEL BASE
⬜	POWER PANEL
⬜	PANEL WITHOUT POWER

REVISION NO.	SYM.	DESCRIPTION	SHT. OF	DATE	APPROVED: STATE PUBLIC WORKS ENGINEER
			DEPT. OF ACCOUNTING & GENERAL SERVICES		
			DIVISION OF PUBLIC WORKS STATE OF HAWAII		
			KONA JUDICIARY COMPLEX FURNITURE AND EQUIPMENT KONA, HI		
			LEVEL 2 - ENLARGED PLAN A		
<p>This work was performed by me or under my supervision and construction of this project will be under my observation. (Observation of construction as defined in Chapter 16-115, Subchapter 1, Definitions of the Hawaii Administrative Rules, "Professional Engineers, Architects, Surveyors, and Landscape Architects.")</p>					
ARCHITECTS HAWAII, LTD.			DAGS JOB NO.	DRAWING NO.	
DESIGNED BY: LK			CHECKED BY: LK	11-21-7673	A202
DRAWN BY: LK			APPROVED BY: LK	DATE	SHEET
signature			04/30/2018 expiration date of the license	JULY 2018	7 OF 14 SHEETS
SCALE: As indicated					



SYMBOL LEGEND	
CFCI	CONTRACTOR FURNISHED, CONTRACTOR INSTALLED
NIC	JUDICIARY FURNISHED, JUDICIARY INSTALLED
BB	BULLETIN BD
BC	BOOKCASE
BD STOR	BOARD STORAGE RACK
BH	BUSINESS CARD HOLDER
BOX	BOXES - METAL STORAGE
C	CHAIR
CAB	CABINET
CART	CART
CD	CASH DRAWER
CDOLLY	DOLLY CHAIR CART
CL	CLOCK
CT	CASH TRAY W/LID
D	DESK
P	PRINTER (NIC)
DEF	DEFBRILLATOR
DEFCAB	DEFIBRILLATOR CABINET
DL	DESK LAMP
DLINE	DRYING LINE
F	FILE CABINET
FLAG	FLAG
HD	HIGH DENSITY FILES (NIC)
HS	HAND SANITIZER
KBT	KEYBOARD W/MOUSE TRAY
KEYBX	KEY CABINET
L	LOCKERS
LEC	LECTERN
MB	MAIL BOX CUBBIE
MH	MONITOR HOLDER
MIR	MIRROR
MW	MICROWAVE OVEN
MOP	MOP HOLDER
OH	OVERHEAD STORAGE
PED	PEDESTAL
PO	PRIVATE OFFICE
PS	PRINTER STAND
REFRIG	REFRIGERATOR
S	SHELVING
SAFE	SAFE
SH	SHELF SYSTEM FURNITURE
SIGN	SIGN HOLDERS
SL	STEP LADDER
SORT	PAPER SORTER
STAN	STANCHION POLE/ROPE
T	TABLE
TR	TRASH CONTAINER
W	WASHER
WB	WHITE WRITER BOARD
WD	WOOD FURNITURE
WS	SYSTEM FURNITURE
MAG	MAGENETOMETER
XRAY	X-RAY SCANNER

LEGEND	
Ⓐ	DUPLEX OUTLET AT PANEL BASE
Ⓑ	DUPLEX OUTLET AT BELTLINE
◁	RJ45 OUTLET AT PANEL BASE
▬	POWER PANEL
▬	PANEL WITHOUT POWER

REVISION NO.	SYM.	DESCRIPTION	SHT. OF	DATE	APPROVED: STATE PUBLIC WORKS ENGINEER
DEPT. OF ACCOUNTING & GENERAL SERVICES DIVISION OF PUBLIC WORKS STATE OF HAWAII					
KONA JUDICIARY COMPLEX FURNITURE AND EQUIPMENT KONA, HI					
LEVEL 2 - ENLARGED PLAN B					
ARCHITECTS HAWAII, LTD.			DAGS JOB NO.	DRAWING NO.	
DESIGNED BY: LK		CHECKED BY: LK	11-21-7673	A203	
DRAWN BY: LK		APPROVED BY: LK	DATE	SHEET	
SCALE: As indicated			JULY 2018	8 OF 14 SHEETS	

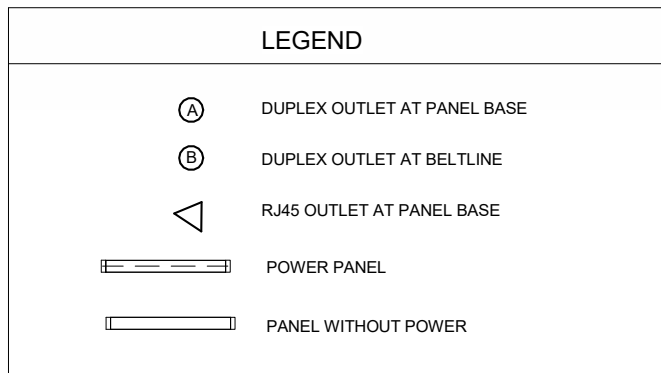
This work was performed by me or under my supervision and construction of this project will be under my observation. (Observation of construction as defined in Chapter 15-115, Subchapter 1 Definitions of the Hawaii Administrative Rules. Professional Engineers, Architects, Surveyors, and Landscape Architects.)

signature \_\_\_\_\_ 04/30/2018 expiration date of the license

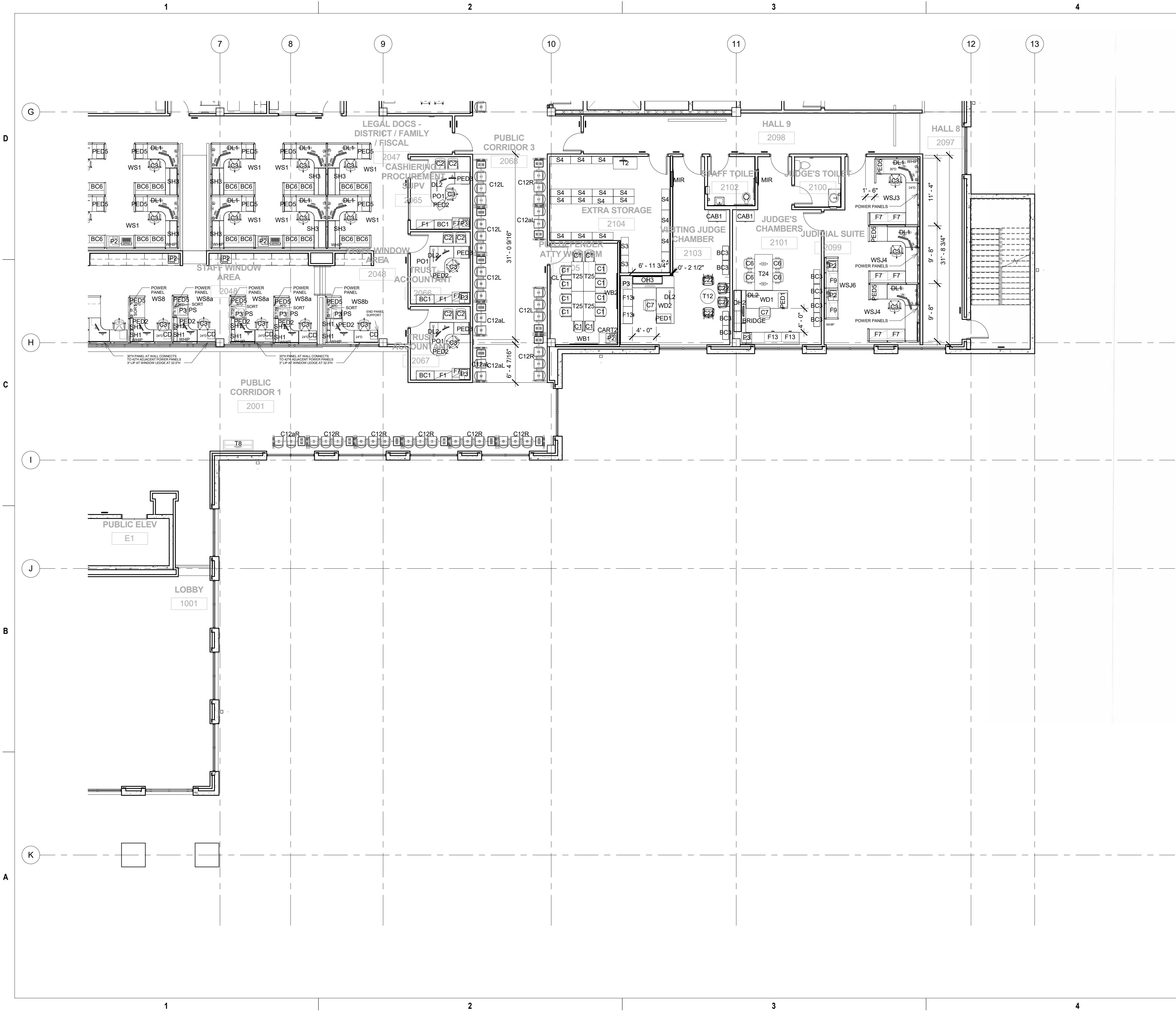
FILE \_\_\_\_\_ DRAWER \_\_\_\_\_ FOLDER \_\_\_\_\_

5





REVISION NO.	SYM.	DESCRIPTION	UHT. _____	DATE	APPROVED STATE PUBLIC WORKS ENGINEER
			DEPT. OF ACCOUNTING & GENERAL SERVICES		
			DIVISION OF PUBLIC WORKS STATE OF HAWAII		
			KONA JUDICIARY COMPLEX FURNITURE AND EQUIPMENT KONA, HI		
			LEVEL 2 - ENLARGED PLAN C		
<p>This work was performed by me or under my supervision and construction of this project will be under my observation. (Observation of construction as defined in Chapter 10-115, Subchapter 1 Definitions of the Hawaii Administrative Rules, "Professional Engineers, Architects, Surveyors, and Landscape Architects.")</p>			<p>DESIGNED BY: <b>ARCHITECTS HAWAII, LTD.</b></p>		<p>DAGS JOB NO.  DRAWING NO. <b>A204</b></p>
<p>04/30/2016</p>			<p>CHECKED BY: LK</p>		<p>11-21-7673</p>
<p>signature _____</p>			<p>DRAWN BY: LK</p>		<p>SHEET 9</p>
<p>expiration date of the license</p>			<p>APPROVED BY: LK</p>		<p>DATE  JULY 2018</p>
<p>SCALE: As indicated</p>					<p>OF 14 SHEETS</p>



SYMBOL LEGEND

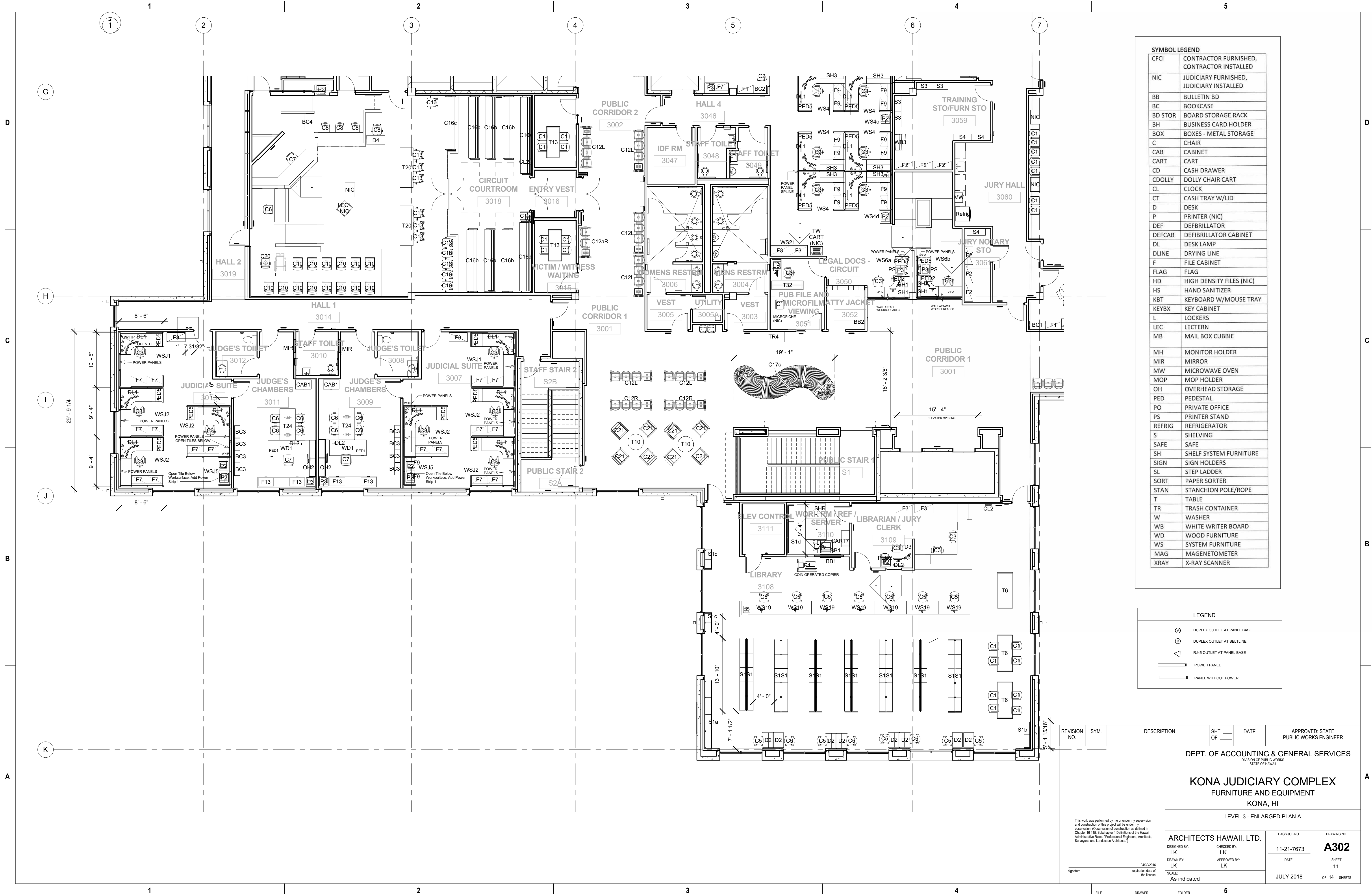
CFCI	CONTRACTOR FURNISHED, CONTRACTOR INSTALLED
NIC	JUDICIARY FURNISHED, JUDICIARY INSTALLED
BB	BULLETIN BD
BC	BOOKCASE
BD STOR	BOARD STORAGE RACK
BH	BUSINESS CARD HOLDER
BOX	BOXES - METAL STORAGE
C	CHAIR
CAB	CABINET
CART	CART
CD	CASH DRAWER
CDOLLY	DOLLY CHAIR CART
CL	CLOCK
CT	CASH TRAY W/LID
D	DESK
P	PRINTER (NIC)
DEF	DEFBRILLATOR
DEFCAB	DEFBRILLATOR CABINET
DL	DESK LAMP
DLINE	DRYING LINE
F	FILE CABINET
FLAG	FLAG
HD	HIGH DENSITY FILES (NIC)
HS	HAND SANITIZER
KBT	KEYBOARD W/MOUSE TRAY
KEYBX	KEY CABINET
L	LOCKERS
LEC	LECTERN
MB	MAIL BOX CUBBIE
MH	MONITOR HOLDER
MIR	MIRROR
MW	MICROWAVE OVEN
MOP	MOP HOLDER
OH	OVERHEAD STORAGE
PED	PEDESTAL
PO	PRIVATE OFFICE
PS	PRINTER STAND
REFRIG	REFRIGERATOR
S	SHELVING
SAFE	SAFE
SH	SHELF SYSTEM FURNITURE
SIGN	SIGN HOLDERS
SL	STEP LADDER
SORT	PAPER SORTER
STAN	STANCHION POLE/ROPE
T	TABLE
TR	TRASH CONTAINER
W	WASHER
WB	WHITE WRITER BOARD
WD	WOOD FURNITURE
WS	SYSTEM FURNITURE
MAG	MAGENETOMETER
XRAY	X-RAY SCANNER

LEGEND

⊙	DUPLEX OUTLET AT PANEL BASE
⊖	DUPLEX OUTLET AT BELTLINE
◁	R45 OUTLET AT PANEL BASE
—	POWER PANEL
—	PANEL WITHOUT POWER

REVISION NO.	SYM.	DESCRIPTION	SHT. OF	DATE	APPROVED: STATE PUBLIC WORKS ENGINEER
DEPT. OF ACCOUNTING & GENERAL SERVICES DIVISION OF PUBLIC WORKS STATE OF HAWAII					
KONA JUDICIARY COMPLEX FURNITURE AND EQUIPMENT KONA, HI					
LEVEL 2 - ENLARGED PLAN D					
ARCHITECTS HAWAII, LTD.			DAGS JOB NO.	DRAWING NO.	
DESIGNED BY: LK	CHECKED BY: LK		11-21-7673	A205	
DRAWN BY: LK	APPROVED BY: LK		DATE	SHEET	
signature			04/30/2018 expiration date of the license	10	
SCALE: As indicated			JULY 2018	OF 14 SHEETS	





SYMBOL LEGEND	
CFCI	CONTRACTOR FURNISHED, CONTRACTOR INSTALLED
NIC	JUDICIARY FURNISHED, JUDICIARY INSTALLED
BB	BULLETIN BD
BC	BOOKCASE
BD STOR	BOARD STORAGE RACK
BH	BUSINESS CARD HOLDER
BOX	BOXES - METAL STORAGE
C	CHAIR
CAB	CABINET
CART	CART
CD	CASH DRAWER
CDOLLY	DOLLY CHAIR CART
CL	CLOCK
CT	CASH TRAY W/LID
D	DESK
P	PRINTER (NIC)
DEF	DEFBRILLATOR
DEFCAB	DEFBRILLATOR CABINET
DL	DESK LAMP
DLINE	DRYING LINE
F	FILE CABINET
FLAG	FLAG
HD	HIGH DENSITY FILES (NIC)
HS	HAND SANITIZER
KBT	KEYBOARD W/MOUSE TRAY
KEYBX	KEY CABINET
L	LOCKERS
LEC	LECTERN
MB	MAIL BOX CUBBIE
MH	MONITOR HOLDER
MIR	MIRROR
MW	MICROWAVE OVEN
MOP	MOP HOLDER
OH	OVERHEAD STORAGE
PED	PEDESTAL
PO	PRIVATE OFFICE
PS	PRINTER STAND
REFRIG	REFRIGERATOR
S	SHELVING
SAFE	SAFE
SH	SHELF SYSTEM FURNITURE
SIGN	SIGN HOLDERS
SL	STEP LADDER
SORT	PAPER SORTER
STAN	STANCHION POLE/ROPE
T	TABLE
TR	TRASH CONTAINER
W	WASHER
WB	WHITE WRITER BOARD
WD	WOOD FURNITURE
WS	SYSTEM FURNITURE
MAG	MAGENETOMETER
XRAY	X-RAY SCANNER

LEGEND	
⊙	DUPLEX OUTLET AT PANEL BASE
⊕	DUPLEX OUTLET AT BELTLINE
△	RMS OUTLET AT PANEL BASE
▬	POWER PANEL
▬	PANEL WITHOUT POWER

REVISION NO.	SYM.	DESCRIPTION	SHT. OF	DATE	APPROVED: STATE PUBLIC WORKS ENGINEER
DEPT. OF PUBLIC WORKS DIVISION OF PUBLIC WORKS STATE OF HAWAII					
KONA JUDICIARY COMPLEX FURNITURE AND EQUIPMENT KONA, HI					
LEVEL 3 - ENLARGED PLAN A					
ARCHITECTS HAWAII, LTD.		DAGS JOB NO.	DRAWING NO.		
DESIGNED BY: LK	CHECKED BY: LK	11-21-7673	A302		
DRAWN BY: LK	APPROVED BY: LK	DATE	SHEET		
SCALE: As indicated		JULY 2018	11 OF 14 SHEETS		

This work was performed by me or under my supervision and construction of this project will be under my observation. (Observation of construction as defined in Chapter 16-15, Subchapter 1 Definitions of the Hawaii Administrative Rules, Professional Engineers, Architects, Surveyors, and Landscape Architects.)

04/30/2016  
expiration date of the license

signature

D

C

B

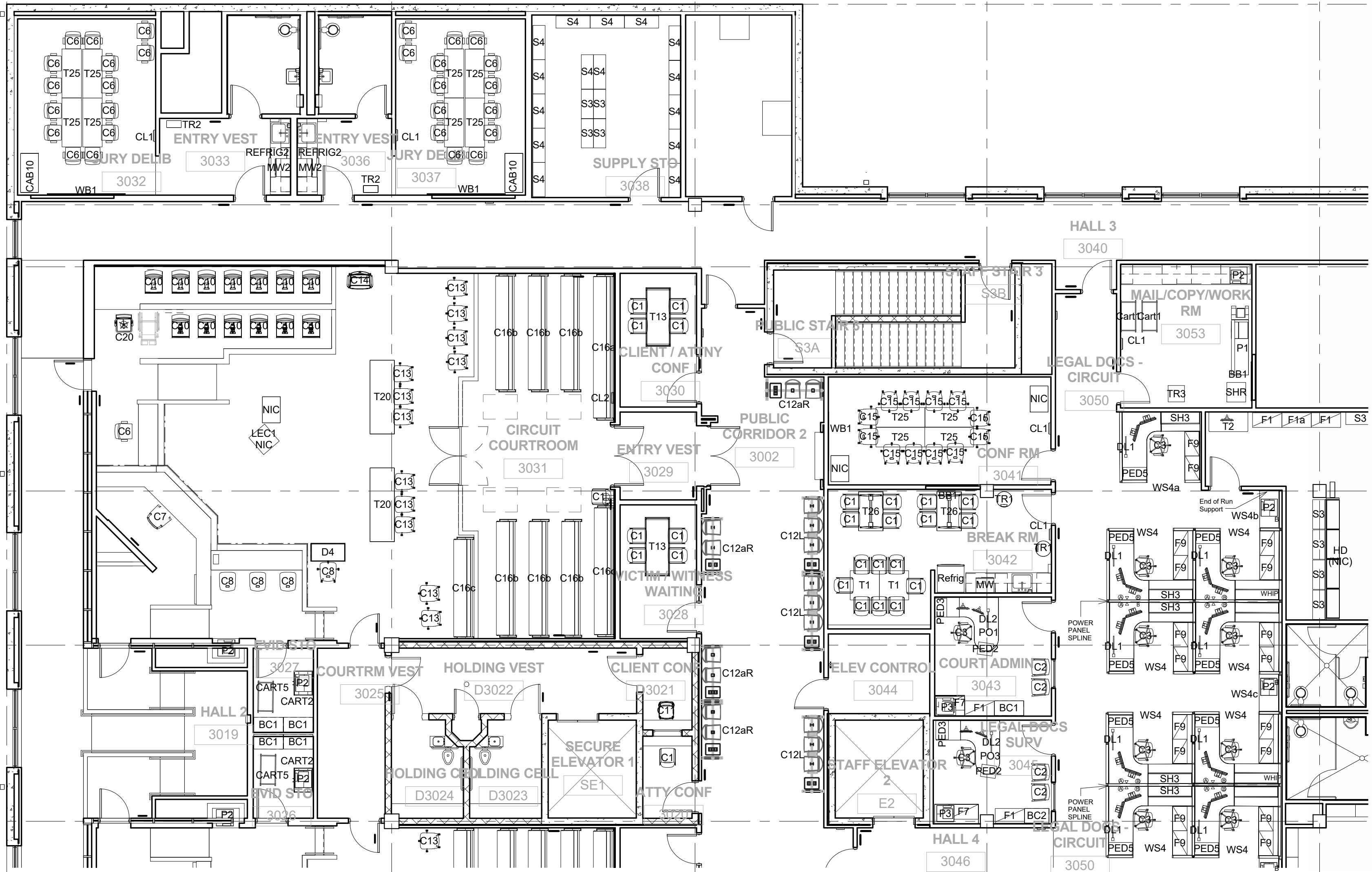
A

D

C

B

A



SYMBOL LEGEND

CFCI	CONTRACTOR FURNISHED, CONTRACTOR INSTALLED
NIC	JUDICIARY FURNISHED, JUDICIARY INSTALLED
BB	BULLETIN BD
BC	BOOKCASE
BD STOR	BOARD STORAGE RACK
BH	BUSINESS CARD HOLDER
BOX	BOXES - METAL STORAGE
C	CHAIR
CAB	CABINET
CART	CART
CD	CASH DRAWER
CDOLLY	DOLLY CHAIR CART
CL	CLOCK
CT	CASH TRAY W/LID
D	DESK
P	PRINTER (NIC)
DEF	DEFBRILLATOR
DEFCAB	DEFBRILLATOR CABINET
DL	DESK LAMP
DLINE	DRYING LINE
F	FILE CABINET
FLAG	FLAG
HD	HIGH DENSITY FILES (NIC)
HS	HAND SANITIZER
KBT	KEYBOARD W/MOUSE TRAY
KEYBX	KEY CABINET
L	LOCKERS
LEC	LECTERN
MB	MAIL BOX CUBBIE
MH	MONITOR HOLDER
MIR	MIRROR
MW	MICROWAVE OVEN
MOP	MOP HOLDER
OH	OVERHEAD STORAGE
PED	PEDESTAL
PO	PRIVATE OFFICE
PS	PRINTER STAND
REFRIG	REFRIGERATOR
S	SHELVING
SAFE	SAFE
SH	SHELF SYSTEM FURNITURE
SIGN	SIGN HOLDERS
SL	STEP LADDER
SORT	PAPER SORTER
STAN	STANCHION POLE/ROPE
T	TABLE
TR	TRASH CONTAINER
W	WASHER
WB	WHITE WRITER BOARD
WD	WOOD FURNITURE
WS	SYSTEM FURNITURE
MAG	MAGENETOMETER
XRAY	X-RAY SCANNER

LEGEND

⊙	DUPLEX OUTLET AT PANEL BASE
⊖	DUPLEX OUTLET AT BELTLINE
◁	RJ45 OUTLET AT PANEL BASE
⬜	POWER PANEL
⬜	PANEL WITHOUT POWER

REVISION NO.	SYM.	DESCRIPTION	SHT. OF ____	DATE	APPROVED: STATE PUBLIC WORKS ENGINEER			
			DEPT. OF ACCOUNTING & GENERAL SERVICES					
			DIVISION OF PUBLIC WORKS STATE OF HAWAII					
			KONA JUDICIARY COMPLEX FURNITURE AND EQUIPMENT KONA, HI					
			LEVEL 3 - ENLARGED PLAN B					
<p>This work was performed by me or under my supervision and construction of this project will be under my observation. (Observation of construction as defined in Chapter 16-115, Subchapter 1 Definitions of the Hawaii Administrative Rules, "Professional Engineers, Architects, Surveyors, and Landscape Architects")</p> <p>signature _____</p> <p>04/30/2016 _____ expiration date of this license</p>			ARCHITECTS HAWAII, LTD.		DAGS JOB NO.			
			DESIGNED BY: LK		CHECKED BY: LK	11-21-7673	DRAWING NO.  <b>A303</b>	
			DRAWN BY: LK		APPROVED BY: LK	DATE		SHEET 12
			SCALE: As indicated		JULY 2018			OF 14 SHEETS

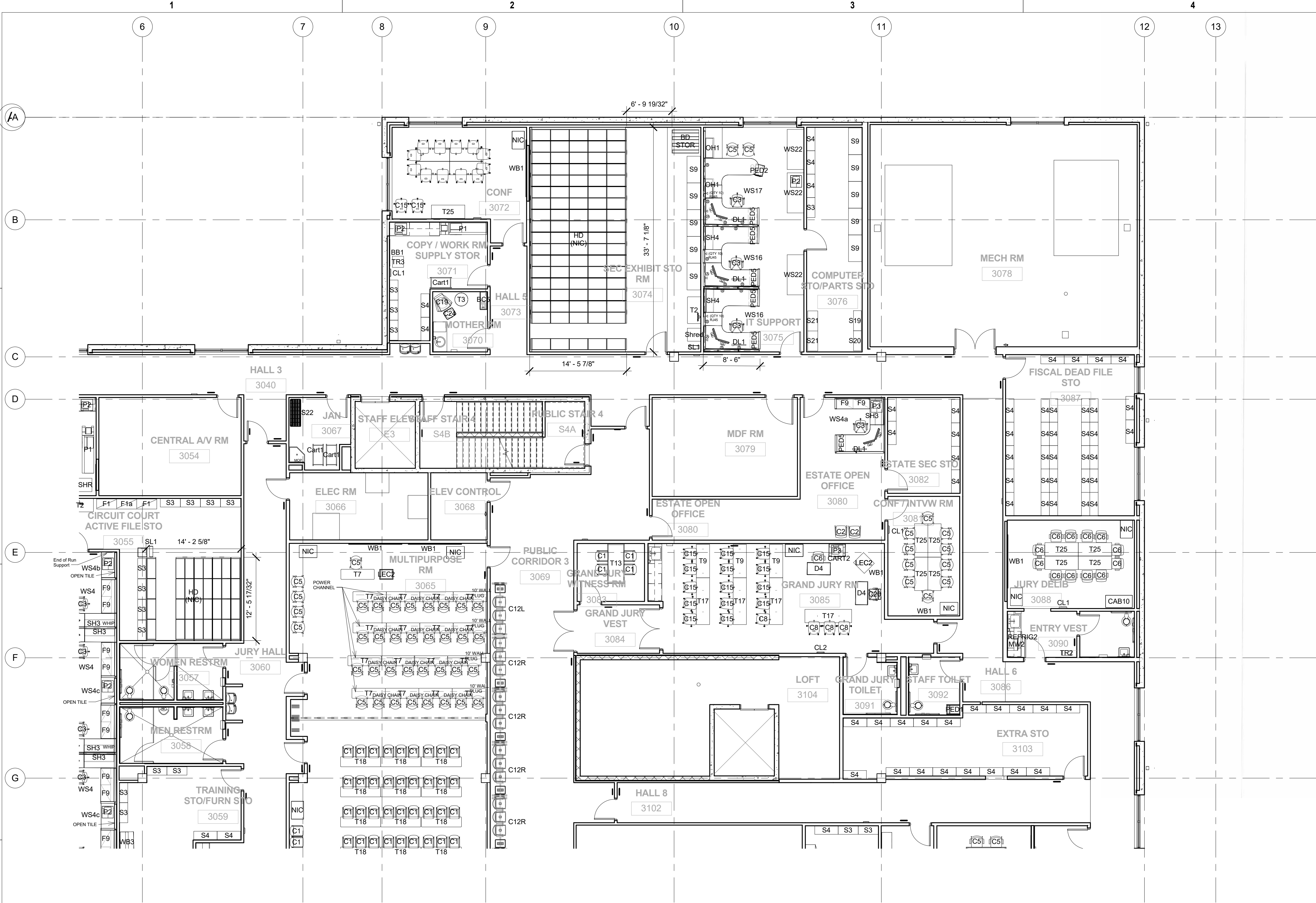
This work was performed by me or under my supervision and construction of this project will be under my observation. (Observation of construction as defined in Chapter 15-115, Subchapter 1 Definitions of the Hawaii Administrative Rules, Professional Engineers, Architects, Surveyors, and Landscape Architects.)

signature

04/30/2018

expiration date of the license





SYMBOL LEGEND	
CFCI	CONTRACTOR FURNISHED, CONTRACTOR INSTALLED
NIC	JUDICIARY FURNISHED, JUDICIARY INSTALLED
BB	BULLETIN BD
BC	BOOKCASE
BD STOR	BOARD STORAGE RACK
BH	BUSINESS CARD HOLDER
BOX	BOXES - METAL STORAGE
C	CHAIR
CAB	CABINET
CART	CART
CD	CASH DRAWER
CDOLLY	DOLLY CHAIR CART
CL	CLOCK
CT	CASH TRAY W/LID
D	DESK
P	PRINTER (NIC)
DEF	DEFBRILLATOR
DEFCAB	DEFBRILLATOR CABINET
DL	DESK LAMP
DLINE	DRYING LINE
F	FILE CABINET
FLAG	FLAG
HD	HIGH DENSITY FILES (NIC)
H5	HAND SANITIZER
KBT	KEYBOARD W/MOUSE TRAY
KEYBX	KEY CABINET
L	LOCKERS
LEC	LECTERN
MB	MAIL BOX CUBBIE
MH	MONITOR HOLDER
MIR	MIRROR
MW	MICROWAVE OVEN
MOP	MOP HOLDER
OH	OVERHEAD STORAGE
PED	PEDESTAL
PO	PRIVATE OFFICE
PS	PRINTER STAND
REFRIG	REFRIGERATOR
S	SHELVING
SAFE	SAFE
SH	SHELF SYSTEM FURNITURE
SIGN	SIGN HOLDERS
SL	STEP LADDER
SORT	PAPER SORTER
STAN	STANCHION POLE/ROPE
T	TABLE
TR	TRASH CONTAINER
W	WASHER
WB	WHITE WRITER BOARD
WD	WOOD FURNITURE
WS	SYSTEM FURNITURE
MAG	MAGENETOMETER
XRAY	X-RAY SCANNER

LEGEND	
	DUPLEX OUTLET AT PANEL BASE
	DUPLEX OUTLET AT BELTLINE
	RJ45 OUTLET AT PANEL BASE
	POWER PANEL
	PANEL WITHOUT POWER

REVISION NO.	SYM.	DESCRIPTION	SHT. OF	DATE	APPROVED: STATE PUBLIC WORKS ENGINEER
DEPT. OF ACCOUNTING & GENERAL SERVICES DIVISION OF PUBLIC WORKS STATE OF HAWAII					
KONA JUDICIARY COMPLEX FURNITURE AND EQUIPMENT KONA, HI					
LEVEL 3 - ENLARGED PLAN C					
ARCHITECTS HAWAII, LTD.			DAGS JOB NO.	DRAWING NO.	
DESIGNED BY: LK	CHECKED BY: LK		11-21-7673	A304	
DRAWN BY: LK	APPROVED BY: LK		DATE	SHEET	
SCALE: As indicated			JULY 2018	13	OF 14 SHEETS

This work was performed by me or under my supervision and construction of this project will be under my observation. (Observation of construction as defined in Chapter 15-115, Subchapter 1 Definitions of the Hawaii Administrative Rules, "Professional Engineers, Architects, Surveyors, and Landscape Architects.")

signature \_\_\_\_\_  
04/30/2018  
expiration date of the license

FILE \_\_\_\_\_ DRAWER \_\_\_\_\_ FOLDER \_\_\_\_\_ **5**