

DAVID Y. IGE
GOVERNOR



RODERICK K. BECKER
Comptroller

AUDREY HIDANO
Deputy Comptroller

STATE OF HAWAII
DEPARTMENT OF ACCOUNTING AND GENERAL SERVICES
P.O. BOX 119, HONOLULU, HAWAII 96810-0119

September 18, 2018

TO WHOM IT MAY CONCERN:

SUBJECT: KONA JUDICIARY COMPLEX
FURNITURE AND EQUIPMENT
DAGS JOB NO. 11-21-7673

Transmitted herewith is one (1) copy of Addendum No. 1 for the subject project.

A handwritten signature in blue ink, consisting of several loops and flourishes.

ACTING PUBLIC WORKS ADMINISTRATOR

Drawings

CAUTION

NOTE TO BIDDERS:

THE OFFER FORM FOR THIS PROJECT HAS BEEN REVISED. IN ORDER NOT TO INVALIDATE YOUR BID, PLEASE ENSURE THAT YOU USE THE "REVISED SOLICITATION, OFFER AND CONTRACT FORM" DATED

September 11, 2018 .

ADDENDUM NO. 1

TO THE INVITATION FOR BIDS

DAGS JOB NO. 11-21-7673

**SEALED OFFERS FOR FURNISHINGS, DELIVERING
AND INSTALLING FURNITURE AND EQUIPMENT FOR
THE KONA JUDICIARY COMPLEX ON THE ISLAND OF
HAWAII**

**TAX MAP KEY: 7-4-020: 030
KONA, HAWAI'I**

**FOR THE JUDICIARY
STATE OF HAWAI'I**

**BY THE DEPARTMENT OF ACCOUNTING AND GENERAL
SERVICES PUBLIC WORKS DIVISION
STATE OF HAWAI'I**

**ISSUED BY RODERICK K. BECKER
COMPTROLLER, STATE OF HAWAI'I**

SEPTEMBER 11, 2018

This addendum modifies the original Solicitation Documents for the Project dated August 2018. The items in this addendum shall govern the work, taking precedence over previously issued specifications and drawings governing the items mentioned. Acknowledge receipt of this Addendum in the space provided on the Offer Form.

A. CHANGES TO INVITATION FOR BIDS:

The following pages of the Solicitation Documents are revised:

1. OFFER FORM: Delete in its entirety and replace with the attached REVISED OFFER FORM dated September 11, 2018. (21 pages)

2. Notice to Offerors, Page NTO-1, Paragraph 1

Delete paragraph 1 in its entirety and replace with the following :

“OFFER FORMS for furnishing, delivering, and installing Furniture for the **KONA JUDICIARY COMPLEX, FURNITURE AND EQUIPMENT, D.A.G.S. JOB NO. 11-21-7673** will be received at the Department of Accounting and General Services, Public Works Division (DAGS PW) Office, fourth floor of the Kalanimoku Building, Room 426, 1151 Punchbowl Street, Honolulu, Hawai'i or at the Hawaii District Office, Department of Accounting & General Services, State Office Building, 75 Aupuni Street, Hilo, Hawaii. Solicitation documents may be obtained on compact disk from the Public Works Division Office, Kalanimoku Building, Room 422 or at the District Office listed above. The solicitation documents may also be available in electronic format from the Department's website at www.hawaii.gov/pwd.hawaii.gov/bidding/. Failure to receive any addenda may cause rejection of a bid.”

3. Special Provisions, Page SP-10, paragraph 1.10, 3, b.

After the last sentence add the following : “This does not apply to the preparation of shop drawings and other submittals which must commence upon notification of award”.

4. Special Provisions, Page SP-10, paragraph 1.12.

Before the first sentence add the following : “Upon notification of award, the Furnishings Contractor shall immediately commence with the preparation of shop drawings and other submittals for approval”

5. Special Provisions Page SP-13,

Delete paragraph 12. Submittal Variances in its entirety and replace with the following:

“12. Submittal Procedures”

- a. Coordinate Work and Submittals: Furnishings Contractor shall certify submittals were reviewed and coordinated.
- b. Submittal Certification: Provide in MS Word when submitting electronically. Contracts Administrator will provide an electronic copy of the Submittal Certification. Provide a reproduction (or stamp) of the “Submittal

Certification” and furnish the required information with all submittals.
Include the certification on:

- c. The title sheet of each shop drawing, or on The cover sheet of submittals in 8-1/2 inch x 11-inch format, or on
- d. One face of a cardstock tag (minimum size 3-inch x 6-inch) tied to each sample. On the sample tag, identify the sample to ensure sample can be matched to the tag if accidentally separated. The opposite face of the tag will be used by the Contracts Administrator to receive, review, log stamp and include comments.
- e. Variances: The Furnishings Contractor shall request approval for a variance. Clearly note any proposed deviations or variances from the Invitation For Bids (IFB), and other Contract Documents on the and also in a separately written letter accompanying the submittal.
- f. Submittal Certification Form (stamp or digital)

FURNISHINGS
CONTRACTOR
NAME: _____

PROJECT: _____

DAGS JOB NO: _____

As the Furnishings Contractor, we checked this submittal and we certify it is correct, complete, and in compliance with the Invitation For Bid (IFB).

SUBMITTAL NUMBER _____ DATE RECEIVED _____

REVISION NUMBER _____ DATE RECEIVED _____

IFB SECTION NUMBER /PARAGRAPH NUMBER _____

DRAWING NUMBER _____

SUPPLIER’S NAME _____

MANUFACTURER’S NAME _____

NOTE: DEVIATIONS FROM THE IFB ARE PROPOSED AS FOLLOWS (Indicate “NONE” if there are no deviations)

CERTIFIED BY	
-----------------	--

6. Special Provisions, Page SP-17, Paragraph 1.16.

1.16.1. Delete “will not be” and replace with “is”.

After sub-paragraph 4 add the following: “5. The Furniture Contractor’s shipping company should visit the project site to determine appropriate vehicles and procedures to be used for delivery. The Furniture Contractor shall be responsible to repair damages to the project site caused by delivery vehicles and other related activities.”

7. Special Provisions Page SP-18, 1.17.13; after last sentence add the following: “The furniture must be ready to ship by Levels 1, Level 2 and Level 3 as coordinated by the FF&E Receiving and Installation Coordinator and ensure timely arrival.”

8. Special Provisions Page SP-20. At the end of 1.20-2 add the following: “Hours for installation will be 7 am to 3:30 pm Weekdays. Special requests to install on weekends or holidays will be on a case by case basis. Timeline for completion must be met.”

9. Special Provisions Page SP-29, At the end of 1.40.1.b .Change <http://www.gov/spo2/source/> to “<http://pwd.hawaii.gov/bidding/>.”

10. General Specifications Page SPEC-4, 1.8.2, add the following

“a. Two (2) Staff Elevators: Overall size: 5’-8”W x 7’-6”D x 8’-6”H, Door size:4’W x 7’H. Padded walls will be provided. Furniture Contractors will be required to provide Plywood floor protection.

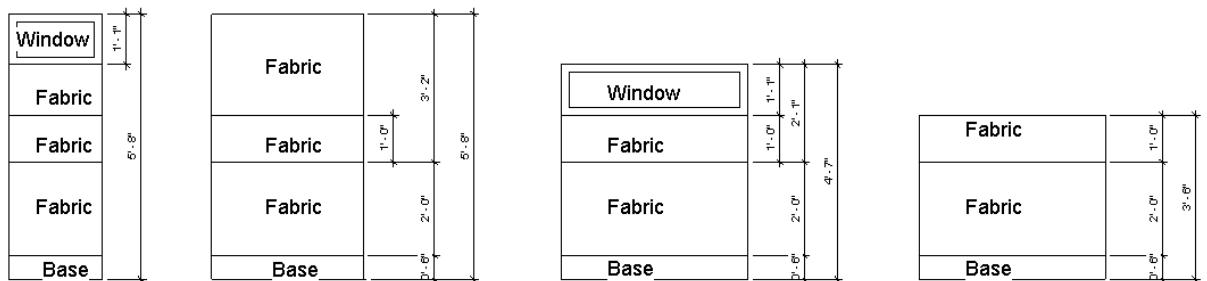
b. Two (2) Public Elevators: Overall size: 7’-8”W x 5’-5”D x 8’-6”H, Door size: 4’W x 8’H. Wall protection is not provided. Furniture Contractors will be required to provide and remove plywood wall and floor protection if these elevators are used.”

11. General Requirements, Page GER-4, 1.7.1

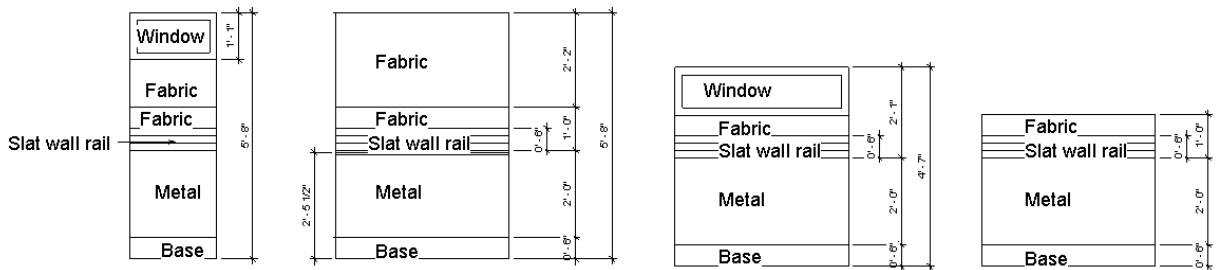
LOCKING; Delete paragraph 1 in its entirety and add the following:

“1. Keying plan for locks will be coordinated with the Judiciary's designated representative(s). Keying plan must be approved by the Judiciary's designated representative(s) before order is placed. (1) Master Key will be required in addition to (2) standard keys for each office, workstation or area. Furniture Contractor to provide a spreadsheet grid of Room Name, Room Number, Key cylinder number, Key number and quantity.”

12. SECTION 3A: GROUP REQUIREMENTS – Page GRR-1, 1.0.1.a General Requirements for Total Systems: Add: “4) Shared system panels should be factored in to the costs.
13. Group Requirements Page GRR-2 Line 2, 1.1.d.3; Change “3 +” thick” to “3” to 3-1/4” maximum thickness,”
14. Group Requirements Page GRR-2 1.0.1..d.9) Line 14: Delete the sentence in its entirety and Add: 9) “System must have leveling glides to allow adjustability on uneven floors.”
15. SECTION 3A: GROUP REQUIREMENTS – Page GRR-4, 1.0.1.1.f. Add “16) Modular Systems Panel Finish Design:



Outside Panel Design



Inside Panel Design

16. SECTION 3A: GROUP REQUIREMENTS – Page GRR-4, 1.0.1.k.: Add “18) General Contractor’s Electrical Contractor will be responsible to install power whips/in feeds. Awarded Furniture Contractor will provide and ship power whip/in feeds to the jobsite as coordinated prior to the furnishings delivery. Furnishings Contractor will be responsible to terminate the power outlets in the workstations.

After notice to proceed is received from the awarded Furniture Contractor, the whips will be shipped as coordinated by the project FF&E coordinator. Whips will arrive before the furniture delivery to allow the General Contractor's Electrical Contractor to install them.

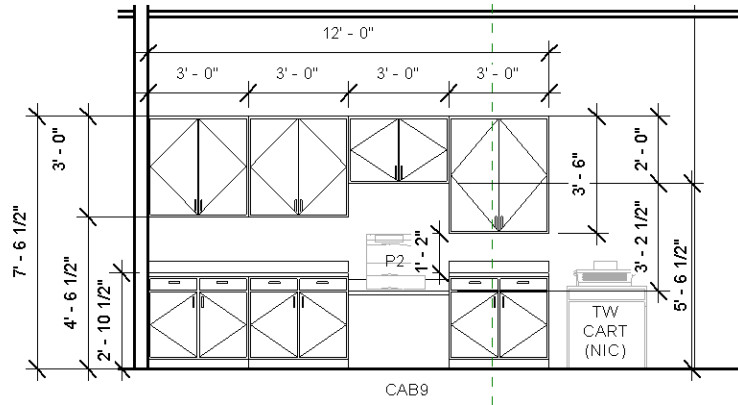
17. SECTION 3A: GROUP REQUIREMENTS – Page GRR-4, 1.0.1.k.: Add “19) No power poles will be utilized in the modular workstations areas.”
18. SECTION 3A: GROUP REQUIREMENTS – Page GRR-4, 1.0.1.l.: Add “4) General Contractor's Communication Contractor will be responsible to provide cabling and termination data plates to the workstations. DAGS furniture coordinator will be responsible to coordinate the timing so cables can be laid into the furniture systems as necessary prior to the furniture contractor placing the workstation's finish panels and trims.”
19. General Requirements, Page GRR- 5, 1.0.1.k.3), delete the following:

“3) 10-wire shared neutral consisting of six hot wires, two 10-gauge neutral wires and two ground” and replace with “Not Used”.

4) 10-wire independent neutral consisting of 4 hot wires, four 12-gauge neutral wires, one ground and one isolated ground.”
20. General Requirements. Page GRR-5, 1.0.1.k.16), delete “and 10-wire”
21. SECTION 3A: GROUP REQUIREMENTS – Page GRR-5, 1.0.1.1.f. Add “16) It is acceptable to not have a panel raceway if the electrical parts/outlets can be installed in the panel just above the raceway area. This allows the electrical outlets to be installed approx..10”-12” AFF on the panel. Beltline power and data outlets will be installed within 30”-41”h AFF above the worksurface. The outlets may fall within the slat wall rails.
22. SECTION 3A: GROUP REQUIREMENTS – Page GRR-5, 1.0.1.k Add “20) No surface mounted power modules are acceptable. All power outlets will be panel mounted.”
23. Group Requirements Page GRR-6. 1.0.1.l.;

Add: “4) Cabling Wireways will have the ability to separate electrical and data 11 cables so there is no interference between them.”
24. SECTION 3A: GROUP REQUIREMENTS – Page GRR-9, 1.0.1.2.a. Add “4) OH1 Workstation Upper Storage Bin: 30”w, OH4 Workstation Upper Storage Bin: 36”w. On Module Overhead Bin can be mounted at any height. Metal Flipper door opens over top of metal bin. Provide (1) divider.

25. SECTION 3A: GROUP REQUIREMENTS – Page GRR-10, 1.0.1.3.a. Add “5) SH3 Workstation Shelf Description: Panel mounted on-module open storage. Shelf widths 48” and 54” to fit panel width. Shelf will be 15” deep as specified. It can be mounted at any height. End panels at 7”-9”h. To accept maximum weight capacity of 50 lbs. per shelf. When mounted under the worksurface, hang the shelf to clear raceway or 6”h after finish floor. Provide 1 divider.
26. SECTION 3A: GROUP REQUIREMENTS – Page GRR-10, 1.0.1.3.a. Add “6) SH4 Workstation Shelf Description: Panel mounted on-module open storage. Shelf width 48” x 15” deep. Can be mounted at any height. End panels at 7”-9”h. SH4 to be mounted 24”h above the worksurface to allow for a printer below. Provide 1 divider.
27. Group Requirements Page GRR-12 Freestanding Systems, Elements 1.b Work Surfaces;
- Delete Paragraph 1) in its entirety and replace with the following:
- “1) Where plastic laminate is specified, all work surfaces shall be a minimum of 1” - 1-3/16” thick and with high-pressure laminate top with matching PVC edge. Bottom surface shall be covered with backer board. Stiffener bar will be mounted under the worksurface for any pieces longer than 48” W. Cable Management channel will be provided under all worksurfaces. Ensure no rough edges to catch nylon stockings or knit fabrics. All other edges shall be 1 mm between work surfaces to allow for a clean tight fit.”
28. Group 1 Specification Sheet BC6, Page 1-7
- Change Shelves: (1) Adjustable Shelf with (2) Openings.
29. Group 1, Specification Sheet CAB9, Page 1-11:
- At Width Range: change 120” to 144”.
At Height Range change 36”H to 34”H
- Delete CAB9 Elevation in its entirety and replace with the following Elevation:

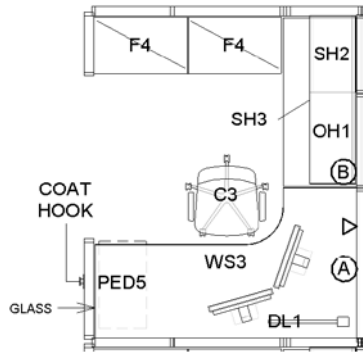


30. Group 1, Specifications Sheet CD, Page 1-11
Change Page Number 1-11 to 1-12.

31. Group 1, Specifications Sheet PED2:
Change Height Range: 23.8" – 28".

32. Group 1,, Specification Sheet WS2, Page 1-50
At Credenza Size: Change 54"W to 55-1/2"W.
At Shelf Lower: Change 48"w to 54"w.
At Special Notes: Delete "(1) Glass Panel".
Delete FINISH SELECTIONS "HPL Panel Outside"

33. Group 1, Specification Sheet WS3, Page 1-52
At Return: Change 60" w to 54"w
At Shelf Lower: Change 48"w to 54"w
Outlet Locations as follows:



34. Group 1, Specification Sheet WS4a, Page 1-54
At Extended Curve: Change 72"W to 84"W.
At Return: Change 54"W to 48"W.
At Credenza: Change 48"W to 60"W.

35. Group 1 Specification Sheet WS6, Page 1-59
At Shelf Upper: 24"W x 7"D; Add (Qty 2)

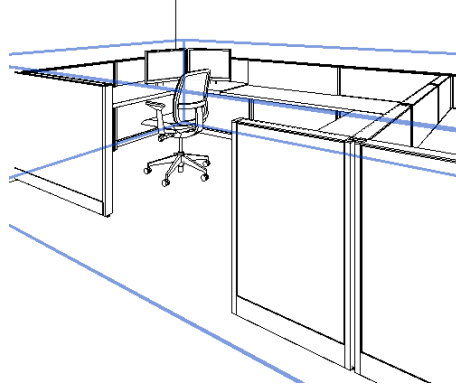
36. Group 1, Specification Sheet WS7, Page 1-62
At Whip: Delete "Whip at Floor monument connect to power panels"
37. Group 1, Specification Sheet WS8, WS8a, WS8b, Pages 1-63.1-64 & 1-65

At SPECIAL NOTES: Add: Panel height along wall with cashier windows will be 30" to 31-1/2"h ; Below worksurfaces will have finished framed opening or removable metal tiles with framed openings. No exposed sharp edges. Wall side of panels will have no panel tiles to accommodate access to wall outlets. Return Panels will be 42"-45"h and powered as shown on drawings.
38. Group 1, Specification Sheet WS9a, Page 1
Change page number 1 to 1-67.
39. Specification Sheet WS11, Page 1-69
At Width Range: Change 72" to 75"
- 39a. Specification Sheet WS15, Page 1-71. Replace with the attached REVISED Page 1-71.
40. Specification Sheet WS16, Page 1-72
At Return: Change 60"W to 24"W.
41. Group 1, Specification Sheet WS17, Page 1-73
At Bullet Curve Size: Change 96"W to 84"W.
42. Group 1, Specification Sheet WS18, Page 1-74
At Special Notes: Add (3) Upper Glass Tiles at desk front and wing panels. No glass panels will abut the drywall.
43. Group 1, Specification Sheet WS19, Page 1-75
At Worksurface: After finish description Add Qty (7).
At Panel Dividers: Add size: 30"w x 36"h x 3"-3-1/4" thick before Qty.
At Special Notes: Add Built-in Pony Wall Surround (NIC) is 42"h AFF.
44. Group 1, Specification Sheet WS21, Page 1-77
At Width Range: Change 84" to 72".
At Depth Range: Change 20" to 18".
45. Group 1, Specification Sheet WSJ1, Page 1-81
At Finish Selections: Add Panel Framed Glass: Clear
At Special Notes: Glass Panels between workstation WSJ1 and WSJ2 and WSJ1 wing panels.
46. Group 1, Specification Sheet WSJ2, Page 1-82
At Extended Curve: Change 84" to 96"

47. Group 1, Specification Sheet WSJ3, Page 1-83

Delete image in upper left corner.

Add image as follows:



At Shelf: Delete Shelf and description in its entirety.

48. Group 1, Specification Sheet WSJ4, Page 1-84

At Metal Shelves: Delete Metal Shelves and description in its entirety.

49. Group 1, Specification Sheet WSJ5, Page 1-85

At Special Notes: Add (1) Lateral File will support the worksurface. (1) Lateral File will be removable. This will allow access to the wall mounted power and data outlets behind the lateral files. Verify at jobsite which lateral file will be removable and label it.

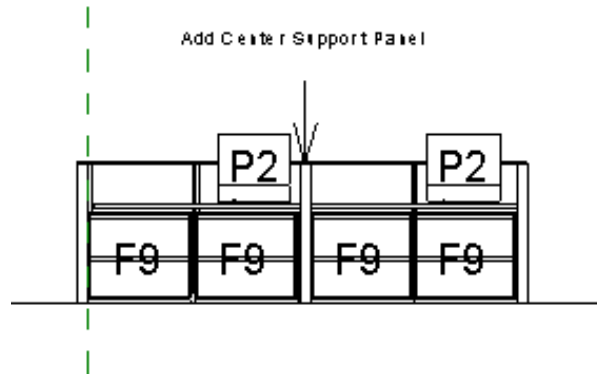
At Special Notes: Delete "Ped5, DL1, F7, C3 specified and counted separately".

50. Group 1, Specification Sheet WSJ6, Page 1-86

At Below Beltline: Delete "Whip Jbox in wall connect to panel."

At Power/Data: Delete "Beltline Outlets". Add: (1) Lateral File will be removable to allow access to the wall mounted power and data outlets behind the lateral files. Verify at jobsite which lateral file will be removable and label it. Provide (Qty) 2 Power Strips

At Special Notes: Add: Center Divider Support Panel 24"w x 42"-45"h x 3"-3-1/4"thick. Same size as wing panels.



51. Group 2, Specification Sheet WD1, Page 2-18
At Pedestal: Add "Legal Width".
52. Group 5, Specification Sheet T3, Page 5-4
At Description: Change Rectangle Round.
53. Group 5, Specification Sheet T5, Page 5-6
Delete Item: T5 in its entirety.
54. Group 5, Specification Sheet T19 Page 5-19:
At Count Change 1 to 2.
55. Group 5, Specification Sheet T23 Page 5-22:
Delete Item: T23 in its entirety.
56. Group 5, Specification Sheet T24, Page 2-17
At Width Range: Delete 30" and Change to 36"
At Depth Range: Delete 15"-18" and Change to 72"
At Height Range: Delete 70 7/8"H and Change to 29"-30"

B. CHANGES TO DRAWINGS: The following previously issued drawings dated JULY 2018 are revised and reissued. These revised drawings supersede the previously issued drawings:

Drawing Number	Drawing Title and Description
A102	LEVEL 1 – ENLARGED PLAN A Updated SYMBOL LEGEND and LEGEND. LOBBY 1001 FF&E layout revised.
A103	LEVEL 1 – ENLARGED PLAN B Updated SYMBOL LEGEND and LEGEND.
A104	LEVEL 1 – ENLARGED PLAN C Updated SYMBOL LEGEND and LEGEND.
A105	LEVEL 1 – ENLARGED PLAN D Updated SYMBOL LEGEND and LEGEND. ADULT CLIENT SVCS 1093 workstation layout revised
A106	CENTRAL UTILITY PLANT

	Updated SYMBOL LEGEND and LEGEND.
A202	LEVEL 2 – ENLARGED PLAN A Updated SYMBOL LEGEND and LEGEND.
A203	LEVEL 2 – ENLARGED PLAN B Updated SYMBOL LEGEND and LEGEND
A204	LEVEL 2 – ENLARGED PLAN C Updated SYMBOL LEGEND and LEGEND.
A205	LEVEL 2 – ENLARGED PLAN D Updated SYMBOL LEGEND and LEGEND.
A302	LEVEL 3 – ENLARGED PLAN A Updated SYMBOL LEGEND and LEGEND.
A303	LEVEL 3 – ENLARGED PLAN B Updated SYMBOL LEGEND and LEGEND.
A304	LEVEL 3 – ENLARGED PLAN C Updated SYMBOL LEGEND and LEGEND.
A305	LEVEL 3 – ENLARGED PLAN D Updated SYMBOL LEGEND and LEGEND.

C. SUBSTITUTION REQUESTS:

Dealer Name	Sym	Yes or No	Comments
Office Pavilion	BC1	Yes	Herman Miller Meridian Storage Case with doors will be accepted. Color will match adjacent furniture.
Office Pavilion	BC2	Yes	Herman Miller Meridian Storage Case with doors will be accepted. Color will match adjacent furniture.
Office Pavilion	BC5	Yes	Herman Miller Storage is acceptable
Office Pavilion	BC3	Pending	Verify Shelf meets 175 lb. max. weight capability
Office Pavilion	BC6	Yes	Herman Miller Storage is acceptable
Office Pavilion	C3	Yes	Via Run II is acceptable
Office Pavilion	C4	No	Does not meet the Ballistic Back and Upholstered Front
Office Pavilion	C6	No	Does not have a Cantilever Arm
Office Pavilion	C8	Yes	Via Run II is acceptable
Office Pavilion	C13	Yes	Via Dyce is acceptable
Office Pavilion	CAB4	Yes	Herman Miller Storage is acceptable
Office Pavilion	CAB9	Yes	Neocase - Group Lacasse Casework is acceptable
Office Pavilion	D1	Yes	Herman Miller Canvas is acceptable
Office Pavilion	D5	Yes	Herman Miller Canvas is acceptable
Office Pavilion	F1	Yes	Herman Miller Storage is acceptable when F1 and BC1 are the same depth in offices PO1, P02, P03 and P04

Office Pavilion	F1a	Yes	Herman Miller Storage is acceptable F1 and F1a are the same depth and height.
Office Pavilion	F2	Yes	Herman Miller Storage is acceptable
Office Pavilion	F3	Yes	Herman Miller Storage is acceptable
Office Pavilion	F4	Yes	Herman Miller Storage is acceptable
Office Pavilion	F7	Yes	Herman Miller Storage is acceptable
Office Pavilion	F9	Yes	Herman Miller Storage is acceptable
Office Pavilion	PED2	Yes	Herman Miller Storage is acceptable
Office Pavilion	PED3	Yes	Herman Miller Storage is acceptable
Office Pavilion	PED5	Yes	Herman Miller Storage is acceptable
Office Pavilion	PO1	Yes	Herman Miller Canvas is acceptable
Office Pavilion	P02	Yes	Herman Miller Canvas is acceptable
Office Pavilion	P03	Yes	Herman Miller Canvas is acceptable
Office Pavilion	P04	Yes	Herman Miller Canvas is acceptable
Office Pavilion	WS1-WS-21	No	Herman Miller Canvas is not acceptable. 35"h panel variance does not meet required criteria.
Office Pavilion	WS24 - WSJ7	No	All workstations must be of same manufacturer.
Office Pavilion	T-1	Yes	Everywhere Table or ERG Drake is acceptable
Office Pavilion	T-2	Yes	Everywhere Table or ERG Drake is acceptable
Office Pavilion	T-3	Yes	Everywhere Table or ERG Drake is acceptable
Office Pavilion	T-4	Yes	Everywhere Table or ERG Drake is acceptable
Office Pavilion	T-5	----	Table Deleted in Addendum 1
Office Pavilion	T-7	Yes	ERG Drake is acceptable Y Leg is higher to clear the Recessed Floor Monument
Office Pavilion	T-9	Yes	ERG Drake is acceptable Y Leg.
Office Pavilion	T-11	Yes	Barri is Acceptable with wall angle support
Office Pavilion	T-14	Yes	ERG Drake is acceptable. Y Leg is higher to clear the Recessed Floor Monument.
Office Pavilion	T-16	Yes	ERG Drake is acceptable. Y Leg is higher to clear the Recessed Floor Monument.
Office Pavilion	T-17	Yes	ERG Drake is acceptable.
Office Pavilion	T-18	Yes	ERG Drake is acceptable.
Office Pavilion	T-19	Yes	ERG Drake is acceptable. Y Leg is higher to clear the Recessed Floor Monument.
Office Pavilion	T-21	Yes	ERG X Base is acceptable
Office Pavilion	T-22	Yes	Everywhere or ERG is acceptable- Staff area
Office Pavilion	T-23	----	Table Deleted In Addendum 1
Office Pavilion	T-25	Yes	ERG Drake is acceptable. Y Leg is higher to clear the Recessed Floor Monument.
Office Pavilion	T-25a	Yes	ERG Drake is acceptable.

Office Pavilion	T-26	Yes	Everywhere or ERG is acceptable- Staff area
Office Pavilion	T-30	Yes	Everywhere or ERG is acceptable
System Center	BC1	Yes	KI 700 Series is acceptable
System Center	BC2	Yes	KI 700 Series is acceptable
System Center	BC3	No	Haworth Masters Series does not meet max shelf capacity weight of 175 lbs.
System Center	BC4	Yes	Haworth Masters Series
System Center	BC5	Yes	KI 700 Series Acceptable.
System Center	BC6	Yes	KI 700 Series is acceptable
System Center	C22	Yes	Haworth Candor acceptable
System Center	CAB1	No	Haworth Master Series does not meet finish match
System Center	CAB4	Yes	KI 700 Series Acceptable.
System Center	CAB9	Yes	Hamilton Sorter acceptable
System Center	D1	Yes	Haworth X-Series Casegoods acceptable
System Center	D3	Yes	Haworth X-Series Casegoods acceptable
System Center	D5	Yes	Haworth X-Series Casegoods acceptable
System Center	F1	Yes	KI 700 Series Acceptable.
System Center	F1a	Yes	KI 700 Series Acceptable.
System Center	F2	Yes	KI 700 Series Acceptable.
System Center	F3	Yes	KI 700 Series Acceptable.
System Center	F4	Yes	KI 700 Series Acceptable.
System Center	F7	Yes	KI 700 Series Acceptable.
System Center	F9	Yes	KI 700 Series Acceptable.
System Center	F13	No	KI 700 Series does not match surrounding colors; wood veneer is specified
System Center	PED2	Yes	KI 700 Series Acceptable.
System Center	PED3	Yes	KI 700 Series Acceptable.
System Center	PED5	Yes	KI 700 Series Acceptable.
System Center	PO1	Yes	Haworth Masters Series & Haworth Compose Series does not match metal storage colors
System Center	PO2	Yes	Haworth Masters Series & Haworth Compose Series does not match metal storage colors
System Center	PO3	Yes	Haworth Masters Series & Haworth Compose Series does not match metal storage colors
System Center	PO4	Yes	Haworth Masters Series & Haworth Compose Series does not match metal storage colors
System Center	T1	Yes	Haworth Jive Series Acceptable.
System Center	T3	Yes	Haworth Jive Series Acceptable.
System Center	T6	Yes	Haworth Jive Series Acceptable.
System Center	T12	Yes	Haworth Jive Series Acceptable.
System Center	T13	Yes	Haworth Jive Series Acceptable.
System Center	T15	Yes	Haworth Jive Series Acceptable.

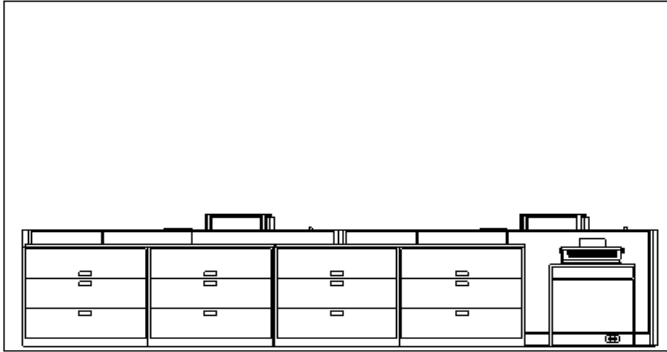
System Center	T24	Yes	Haworth Jive Series Acceptable.
System Center	T30	Yes	Haworth Jive Series Acceptable.
System Center	WD1	No	Haworth Masters Series does not meet BC3 Shelf weight capacity and all finishes, details in the Judge's Chambers must match.
System Center	WD2	No	Haworth Masters Series does not meet BC3 Shelf weight capacity and all finishes, details in the Judge's Chambers must match.
System Center	WS1 - WS24	Yes	Haworth Compose Series is acceptable
System Center	WSJ1 - WSJ6	Yes	Haworth Compose Series is acceptable
Furniture Plus Design	D3	Yes	Teknion Expansion Desking
Furniture Plus Design	PO1	Yes	Teknion Expansion Casegoods
Furniture Plus Design	PO2	Yes	Teknion Expansion Casegoods
Furniture Plus Design	PO3	Yes	Teknion Expansion Casegoods
Furniture Plus Design	PO4	Yes	Teknion Expansion Casegoods
Furniture Plus Design	D1	Yes	Teknion Expansion Desking
Furniture Plus Design	D5	Yes	Teknion Expansion Desking
Furniture Plus Design	WS9	Yes	Teknion Expansion Desking
Furniture Plus Design	WS13	Yes	Teknion Expansion Desking
Furniture Plus Design	WS20	Yes	Teknion Expansion Desking
Infinium Interiors, Inc.	D2	Yes	Narrate is acceptable
Infinium Interiors, Inc.	C1	No	Poly Seat is not supported adequately
Infinium Interiors, Inc.	CDOLLY	No	Poly Dolly is not approved
Infinium Interiors, Inc.	C2	No	Joya Mesh Back is not acceptable.
Infinium Interiors, Inc.	C5	No	Flip Mesh back is not acceptable
Infinium Interiors, Inc.	C6	No	Joya Arms are not correct style or color.
Infinium Interiors, Inc.	C7	No	Stature Wood Base & Arms are not acceptable Back height is not high enough.
Infinium Interiors, Inc.	C8	Yes	Joya Low Height Task is acceptable armless
Infinium Interiors, Inc.	C10	Yes	Stature Jury Base with Poly arm is acceptable.
Infinium Interiors, Inc.	C13	Yes	Stature Poly Base & Arms are acceptable.
Infinium Interiors, Inc.	C15	No	Joya Back is not upholstered as required
Infinium Interiors, Inc.	C19	Yes	Theo is acceptable
Infinium Interiors, Inc.	C20	Yes	Stature Mid-Back is acceptable with Poly Base & Arms
Infinium Interiors, Inc.	C24	Yes	Theo is acceptable
Infinium Interiors, Inc.	T1	Yes	Dock is acceptable
Infinium Interiors, Inc.	T2	Yes	Dock is acceptable
Infinium Interiors, Inc.	T4	Yes	Dock is acceptable
Infinium Interiors, Inc.	T5	Yes	Dock is acceptable

Infinium Interiors, Inc.	T6	Yes	Priority is acceptable
Infinium Interiors, Inc.	T13	Yes	Priority is acceptable
Infinium Interiors, Inc.	T15	Yes	Priority is acceptable
Infinium Interiors, Inc.	T16	Yes	Dock is acceptable
Infinium Interiors, Inc.	T19	Yes	Dock is acceptable
Infinium Interiors, Inc.	T21	Yes	Dock is acceptable
Infinium Interiors, Inc.	T22	Yes	Dock is acceptable
Infinium Interiors, Inc.	T23	No	Table deleted in addendum 1
Infinium Interiors, Inc.	T26	Yes	Dock is acceptable
Infinium Interiors, Inc.	T30	Yes	Dock is acceptable

KONA JUDICIARY COMPLEX

PROJECT NUMBER 11-21-7673

JULY 2018



ITEM: WS15

**GROUP 1: SYSTEM FURNITURE,
SYSTEM STORAGE, ACCESSORIES**

WS15 LOCATIONS		
RM NO.	ROOM NAME	COUNT
LEVEL 2		
	2047 Legal Docs Dist/Fam Fiscal (1)	1
TOTAL		1

ITEM TAG CODE:	WS15
DESCRIPTION:	WORKCOUNTER

MANUFACTURERS

PRE APPROVED KIMBALL OFFICE NARRATE
 ALSO APPROVED TEKNION LEVERAGE
 ALSO APPROVED STEELCASE ANSWER

SIZE

WIDTH RANGE: 144"
 DEPTH RANGE: 18" - 20"
 WORKSURFACE HT: 40" - 42"

FINISH SELECTIONS

WORKSURFACE: HPL WILSONART CRISP LINEN
 LINEN 4942-38
 WKSURFACE EDGE: PVC MATCHING EDGE BAND

WARRANTY: LIFETIME LIMITED

SPECIAL NOTES: FABRICATE WORKTOP OVER FILES WITH
 ONE BREAK; TWO PIECES
 F3 3-HIGH LATERAL FILE SPECIFIED
 AND COUNTED SEPARATELY
 TYPEWRITER / STAND (NIC)
 PROVIDE POWER OUTLET ON PANEL
 BEHIND TYPEWRITER

REVISED OFFER FORM
FURNISH, DELIVER AND INSTALL FURNITURE AND EQUIPMENT
FOR THE KONA JUDICIARY COMPLEX, KONA, HAWAII, HAWAII
DAGS JOB NO. 11-21-7673

Public Works Administrator
Department of Accounting and General Services
Public Works Division
State of Hawai'i
Honolulu, Hawai'i 96813

Dear Sir,

The undersigned has carefully read and understands the terms and conditions specified in the Specifications, Special Provisions, and the Attorney General's General Conditions, AG-008, by reference made a part hereof and available upon request; and hereby submits the following offer to perform the work specified herein, all in accordance with the true intent and meaning thereof. It is understood that the State reserves the right to accept or reject any or all offers, and to waive any defect in any offer when, in the opinion of the State, such acceptance or rejection is in the best interest of the State. The undersigned further understands and agrees that by submitting this offer, 1) he/she is declaring his/her offer is not in violation of Chapter 84, Hawai'i Revised Statutes, concerning prohibited State contracts, and 2) he/she is certifying that the price(s) submitted was (were) independently arrived at without collusion.

Offeror is:

Sole Proprietor Partnership Corporation Joint Venture Other _____

State of Incorporation: _____

Hawaii General Excise Tax License I. D. No.: _____

Payment Address (other than street address below): _____

City, State, Zip Code: _____

Business Address (street address): _____

City, State, Zip Code: _____

Respectfully Submitted:

Date: _____

X _____
Authorized (Original) Signature

Telephone No.: _____

Fax No.: _____

Name and Title (Please Type or Print)

E-mail Address: _____

* _____
Exact Legal Name of Company (Offeror)

*If Offeror is a "dba" or a "division" of a corporation, furnish the exact legal name of the corporation under which the award of contract will be executed:

RECEIPT OF ADDENDA

Offeror acknowledges receipt of the following Addenda issued by the Department, and the Offeror shall indicate by marking each applicable box:

- | | |
|---|---|
| <input type="checkbox"/> Addendum No. 1 | <input type="checkbox"/> Addendum No. 5 |
| <input type="checkbox"/> Addendum No. 2 | <input type="checkbox"/> Addendum No. 6 |
| <input type="checkbox"/> Addendum No. 3 | <input type="checkbox"/> Addendum No. 7 |
| <input type="checkbox"/> Addendum No. 4 | <input type="checkbox"/> Addendum No. 8 |

KONA JUDICIARY COMPLEX FURNITURE AND EQUIPMENT, KONA, HAWAI'I, HAWAI'I

ITEM	DESCRIPTION	PAGE	BRAND NAME & MODEL	QTY	UNIT PRICE	TOTAL PRICE
GROUP 1. SYSTEMS FURNITURE, STORAGE AND ACCESSORIES						
BB1	BULLETIN BOARD	1-1		21		
BB2	BULLETIN BOARD	1-2		4		
BB4	BULLETIN BD ACRYLIC DOORS	1-3		1		
BC1	BOOKCASE 5HI METAL CLOSED	1-4		49		
BC2	BOOKSHELF 5HI METAL CLOSED	1-5		1		
BC5	BOOKCASE 3-HIGH METAL	1-6		1		
BC6	BOOKCASE 2-HIGH METAL	1-7		24		
BH	BUSINESS CARD HOLDER	1-8		1		
BOX	BOX METAL STORAGE	1-9		48		
CAB4	CABINET LOW METAL DOORS	1-10		1		
CAB9	CABINETS UPPER AND LOWER	1-11		1		
CD	CASH DRAWER	1-12		7		
CL1	CLOCK MID SIZE	1-13		32		

Addendum No. 1 (9/11/2018)

REVISED OFFER FORM

OF-2

KONA JUDICIARY COMPLEX FURNITURE AND EQUIPMENT, KONA, HAWAI'I, HAWAI'I

ITEM	DESCRIPTION	PAGE	BRAND NAME & MODEL	QTY	UNIT PRICE	TOTAL PRICE
GROUP 1. SYSTEMS FURNITURE, STORAGE AND ACCESSORIES						
CL2	CLOCK LARGE	1-14		8		
CT	CASH TRAY W/LID	1-15		3		
D1	DESK / CREDENZA	1-16		2		
D3	DESK LIBRARIAN	1-17		1		
D5	DESK METAL ATTACHED BF PED	1-18		4		
DL1	DESK TASK LIGHT PANEL MOUNT	1-88		98		
DL2	DESK TASK LIGHT FREESTANDING	1-89		34		
F1	FILE 5-HI LATERAL	1-19/1-20		62		
F1a	FILE LATERAL 5-HI LATERAL POSTING SHELF	1-21		25		
F2	FILE LATERAL 5-HI LATERAL POSTING SHELF	1-22		70		
F3	FILE 3-HI LATERAL	1-23		32		
F4	FILE LATERAL 5 HIGH	1-24		64		
F7	FILE LATERAL 2 HIGH	1-25/1-26		74		
F9	FILE 2-HI LATERAL	1-27		63		

Addendum No. 1 (9/11/2018)

REVISED OFFER FORM

KONA JUDICIARY COMPLEX FURNITURE AND EQUIPMENT, KONA, HAWAI'I, HAWAI'I

ITEM	DESCRIPTION	PAGE	BRAND NAME & MODEL	QTY	UNIT PRICE	TOTAL PRICE
GROUP 1. SYSTEMS FURNITURE, STORAGE AND ACCESSORIES						
F10	FILE 5-HI VERTICAL FIRE RATED	1-28		1		
KBT	KEYBOARD W/MOUSE TRAY	1-29		25		
KEY1	KEY CABINET MEDIUM	1-30		1		
KEY2	KEY CABINET SMALL	1-31		1		
L	LOCKERS DOUBLE TIER	1-32		20		
LEC2	LECTURN	1-33		4		
LINE	CLOTHES LINE	1-34		1		
MB	MAILBOX CUBBIE	1-35		2		
PED2	PEDESTAL BF MOBILE	1-36		40		
PED3	PEDESTAL BBF FIXED 22"D	1-37		38		
PED5	PEDESTAL BBF FIXED 28:D	1-38		111		
PO1	PRIVATE OFFICE	1-39		22		
PO2	PRIVATE OFFICE	1-40		1		

Addendum No. 1 (9/11/2018)

REVISED OFFER FORM

OF-4

KONA JUDICIARY COMPLEX FURNITURE AND EQUIPMENT, KONA, HAWAI'I, HAWAI'I

ITEM	DESCRIPTION	PAGE	BRAND NAME & MODEL	QTY	UNIT PRICE	TOTAL PRICE
------	-------------	------	--------------------	-----	------------	-------------

GROUP 1. SYSTEMS FURNITURE, STORAGE AND ACCESSORIES

PO3	PRIVATE OFFICE	1-41		1		
PO4	PRIVATE OFFICE	1-42		1		
POWER	POWER STRIP	1-43		35		
PS	PRINTER STAND LOW	1-44		10		
SORT1	PAPER SORTER 12 OPENINGS	1-45		13		
WB1	WHITE WRITER BOARD	1-46		26		
WB3	WHITE WRITER MOBILE	1-47		3		
WHIP	POWER INFEED FOR WORKSTATIONS	ADD-1		51		
WS1	WORKSTATION	1-48		12		
WS1a	PRINTER /TYPEWRITER COUNTER	1-49		2		
WS2	WORKSTATION	1-50		14		
WS2a	WORK COUNTER	1-51		2		
WS3	WORKSTATION	1-52		30		

Addendum No. 1 (9/11/2018)

REVISED OFFER FORM

KONA JUDICIARY COMPLEX FURNITURE AND EQUIPMENT, KONA, HAWAI'I, HAWAI'I

ITEM	DESCRIPTION	PAGE	BRAND NAME & MODEL	QTY	UNIT PRICE	TOTAL PRICE
GROUP 1. SYSTEMS FURNITURE, STORAGE AND ACCESSORIES						
WS4	WORKSTATION	1-53		16		
WS4a	WORKSTATION	1-54		2		
WS4b	PRINTER/TYPEWRITER COUNTER	1-55		1		
WS4c	PRINTER COUNTER	1-56		2		
WS4d	PRINTER COUNTER	1-57		1		
WS5	WORKSTATION @ WINDOW	1-58		2		
WS6	WORKSTATION @ WINDOW	1-59		2		
WS6a	WORKSTATION @ WINDOW	1-60		1		
WS6b	WORKSTATION	1-61		1		
WS7	WORKSTATION	1-62		2		
WS8	WORKSTATION	1-63		3		
WS8a	WORKSTATION	1-64		3		
WS8b	WORKSTATION	1-65		9		

Addendum No. 1 (9/11/2018)

REVISED OFFER FORM

OF-6

KONA JUDICIARY COMPLEX FURNITURE AND EQUIPMENT, KONA, HAWAI'I, HAWAI'I

ITEM	DESCRIPTION	PAGE	BRAND NAME & MODEL	QTY	UNIT PRICE	TOTAL PRICE
------	-------------	------	--------------------	-----	------------	-------------

GROUP 1. SYSTEMS FURNITURE, STORAGE AND ACCESSORIES

WS9	WORK COUNTER	1-66		1		
WS9a	WORK COUNTER	1-67		1		
WS10	WORKSTATION	1-68		1		
WS11	WORK COUNTER	1-69		1		
WS13	WORKSTATION	1-79		1		
WS15	WORK COUNTER	1-71		1		
WS16	WORKSTATION	1-72		2		
WS17	WORKSTATION	1-73		1		
WS18	WORKSTATION	1-74		1		
WS19	DESKING SYSTEM LIBRARY INTERNET	1-75		7		
WS20	DESKING SYSTEM FREESTANDING	1-76		1		
WS21	WORK COUNTER	1-77		1		
WS22	WORK BENCH SUPPORT	1-78		3		

Addendum No. 1 (9/11/2018)

REVISED OFFER FORM

OF-7

KONA JUDICIARY COMPLEX FURNITURE AND EQUIPMENT, KONA, HAWAI'I, HAWAI'I

ITEM	DESCRIPTION	PAGE	BRAND NAME & MODEL	QTY	UNIT PRICE	TOTAL PRICE
GROUP 1. SYSTEMS FURNITURE, STORAGE AND ACCESSORIES						
WS23	DELETED	1-79		3		
WS24	WORKSTATION	1-80		1		
WSJ1	JUDICIAL SUITES	1-81		2		
WSJ2	JUDICIAL SUITES	1-82		6		
WSJ3	JUDICIAL SUITES	1-83		1		
WSJ4	JUDICIAL SUITES	1-84		2		
WSJ5	PRINTER STATION	1-85		4		
WSJ6	PRINTER STATION DOUBLE	1-86		1		
WSJ7	WORKSTATION	1-87		8		
TOTAL SUM BID- GROUP 1. SYSTEMS FURNITURE, SYSTEM STORAGE & ACCESSORIES						\$

Note: Offerors shall prepare their bid based on the quantities shown in this Offer Form and not on the rooms and quantities listed in the technical specifications.

KONA JUDICIARY COMPLEX FURNITURE AND EQUIPMENT, KONA, HAWAI'I, HAWAI'I

ITEM	DESCRIPTION	PAGE	BRAND NAME & MODEL	QTY	UNIT PRICE	TOTAL PRICE
------	-------------	------	--------------------	-----	------------	-------------

GROUP 2. WOOD FURNITURE

BC3	BOOKCASE WOOD	2-1		24		
BC4	BOOKCASE WOOD	2-2		5		
C16a	BENCH GALLERY	2-3		6		
C16b	BENCH GALLERY	2-4		30		
C16c	BENCH GALLERY	2-5		2		
C16d	BENCH GALLERY	2-6		6		
CAB1	CABINET WARDROBE	2-7		6		
D2	CARRELS (1 UNIT BACK TO BACK)	2-8		4		
D4	DESK BAILIFF	2-9		7		
F13	FILE WOOD 2-HI LATERAL	2-10		12		
FLAG 1	FLAG USA INDOOR	2-11		7		
FLAG 2	FLAG HAWAII INDOOR	2-12		7		
FLAG 3	FLAG USA OUTDOOR	2-13		1		

Addendum No. 1 (9/11/2018)

REVISED OFFER FORM

OF-9

KONA JUDICIARY COMPLEX FURNITURE AND EQUIPMENT, KONA, HAWAI'I, HAWAI'I

ITEM	DESCRIPTION	PAGE	BRAND NAME & MODEL	QTY	UNIT PRICE	TOTAL PRICE
GROUP 2. WOOD FURNITURE						
FLAG 4	FLAG HAWAII OUTDOOR	2-14		1		
MIR	MIRROR	2-15		6		
T20	TABLE COUNSEL	2-16		12		
T24	TABLE CONFERENCE	2-17		5		
WD1	CHAMBER OFFICE	2-18/2-19		5		
WD2	VISITING CHAMBER OFFICE	2-20/2-21		1		
TOTAL SUM BID- GROUP 2. WOOD FURNITURE						\$

Note: Offerors shall prepare their bid based on the quantities shown in this Offer Form and not on the rooms and quantities listed in the technical specifications.

KONA JUDICIARY COMPLEX FURNITURE AND EQUIPMENT, KONA, HAWAI'I, HAWAI'I

ITEM	DESCRIPTION	PAGE	BRAND NAME & MODEL	QTY	UNIT PRICE	TOTAL PRICE
------	-------------	------	--------------------	-----	------------	-------------

GROUP 3. SEATING AND MISC.

C1	CHAIR STACKING SLED BASE	3-1/3-2		343		
C2	CHAIR GUEST W/ARMS	3-3		42		
C3	CHAIR TASK WITH ARMS	3-4/3-5		143		
C4	CHAIR TASK HEAVY DUTY	3-6		6		
C5	CHAIR NESTING FLIP SEAT	3-7		95		
C6	CHAIR TASK MESH ARMS	3-8		62		
C7	CHAIR EXECUTIVE TASK	3-9		11		
C8	CHAIR TASK MESH ARMLESS	3-10		20		
C9	CHAIR TASK STOOL	3-11		5		
C10	CHAIR JURY POST BASE	3-12		26		
C11	CHAIR STACKING SECURE AREA	3-13		3		
C12aL	CHAIR BEAM SEATING	3-14		6		
C12aR	CHAIR BEAM SEATING	3-15		9		
C12cR	CHAIR BEAM SEATING	3-16		5		

Addendum No. 1 (9/11/2018)

REVISED OFFER FORM

KONA JUDICIARY COMPLEX FURNITURE AND EQUIPMENT, KONA, HAWAI'I, HAWAI'I

ITEM	DESCRIPTION	PAGE	BRAND NAME & MODEL	QTY	UNIT PRICE	TOTAL PRICE
------	-------------	------	--------------------	-----	------------	-------------

GROUP 3. SEATING AND MISC.

C12L	CHAIR BEAM SEATING	3-17		39		
C12R	CHAIR BEAM SEATING	3-18		35		
C13	CHAIR TASK ARMLESS	3-19		62		
C14	CHAIR BARIATRIC NO CASTERS	3-20		2		
C15	CHAIR UPHOL BACK/SEAT ARMLESS	3-21		65		
C17a	SLAT WOOD PUBLIC SEATING	3-22		1		
C17b	SLAT WOOD PUBLIC SEATING	3-23		1		
C17c	SLAT WOOD PUBLIC SEATING	3-24		1		
C18	CHAIR LOCKER STOOL	3-25		3		
C19	CHAIR HIGH BACK	C-26		1		
C20	CHAIR JURY 5 STAR BASE	2-27		3		
C21	CHAIR LOUNGE PUBLIC	3-28		8		
C22	CHAIR WOOD ARM & BACK UPHOL SEAT	3-29		4		
C24	OTTOMAN	3-30		1		

Addendum No. 1 (9/11/2018)

REVISED OFFER FORM

OF-12

KONA JUDICIARY COMPLEX FURNITURE AND EQUIPMENT, KONA, HAWAI'I, HAWAI'I

ITEM	DESCRIPTION	PAGE	BRAND NAME & MODEL	QTY	UNIT PRICE	TOTAL PRICE
------	-------------	------	--------------------	-----	------------	-------------

GROUP 3. SEATING AND MISC.

C25	CHAIR BEAM SEATING	3-31		4		
C26	CHAIR BEAM SEATING	3-32		8		
CDOLLY	DOLLY CHAIR CART	3-33		2		
HS1	HAND SANITIZER FLOOR	3-34		18		
MOP	MOP HANGER RACK	3-35		3		
MW	MICROWAVE OVEN- WHITE	3-36		7		
MW2	MICROWAVE OVEN - BLACK	3-37				
REFRIG	REFRIGERATOR	3-38		6		
REFRIG2	REFRIGERATOR UNDERCOUNTER	3-39		3		
SIGN1	SIGN HOLDERS	3-40		40		
SIGN2	SIGN HOLDERS	3-41		10		
SL1	STEP LADDER	3-42		6		
T10	TABLE OCCASIONAL	3-43		2		

Addendum No. 1 (9/11/2018)

REVISED OFFER FORM

OF-13

KONA JUDICIARY COMPLEX FURNITURE AND EQUIPMENT, KONA, HAWAI'I, HAWAI'I

ITEM	DESCRIPTION	PAGE	BRAND NAME & MODEL	QTY	UNIT PRICE	TOTAL PRICE
GROUP 3. SEATING AND MISC.						
TR1	TRASH SQUARE 20X20	3-44		13		
TR2	TRASH SLIM JIM	3-45		3		
TR3	TRASH RECTANGLE 20X16	3-46		8		
TR4	TRASH RECYCLE CABINET	3-47		3		
TR5	TRASH - MOBILE WASTE	3-48		5		
TR6	TRASH WASTEBASKET	3-49		150		
W	WASHER	3-50		1		
TOTAL SUM BID- GROUP 3. SEATING & MISCELANEOUS						\$

Note: Offerors shall prepare their bid based on the quantities shown in this Offer Form and not on the rooms and quantities listed in the technical specifications.

KONA JUDICIARY COMPLEX FURNITURE AND EQUIPMENT, KONA, HAWAI'I, HAWAI'I

ITEM	DESCRIPTION	PAGE	BRAND NAME & MODEL	QTY	UNIT PRICE	TOTAL PRICE
------	-------------	------	--------------------	-----	------------	-------------

GROUP 4. INDUSTRIAL STORAGE AND SHELVING

BD STOR	BOARD STORAGE RACK	4-1		1		
CAB2	CABINET TALL METAL DOORS	4-2		1		
CAB5	CABINET METAL DOUBLE DOOR	4-3		1		
CAB6	CABINET TOOLS HEAVY DUTY	4-4		4		
CAB8	CABINET METAL SINGLE DOOR	4-5		1		
CART1	CART JANITOR	4-6		6		
CART2	CART PRINTER STAND W/DOORS	4-7		8		
CART5	CART RECESSED TOP	4-8		17		
CART6	CART FLAT TOP	4-9		4		
CART7	CART LIBRARY	4-10		1		
S1	SHELVING LIBRARY	4-11		14		
S1a	SHELVING LIBRARY	4-12		1		
S1b	SHELVING LIBRARY	4-13		1		

Addendum No. 1 (9/11/2018)

REVISED OFFER FORM

OF-15

KONA JUDICIARY COMPLEX FURNITURE AND EQUIPMENT, KONA, HAWAI'I, HAWAI'I

ITEM	DESCRIPTION	PAGE	BRAND NAME & MODEL	QTY	UNIT PRICE	TOTAL PRICE
-------------	--------------------	-------------	-------------------------------	------------	-------------------	--------------------

GROUP 4. INDUSTRIAL STORAGE AND SHELVING

S1c	SHELVING LIBRARY	4-14		2		
S1d	SHELVING LIBRARY	4-15		1		
S2	SHELVES HDPE	4-16		1		
S3	SHELVES CLOSED BACK/SIDES	4-17		36		
S4	SHELVES HEAVY DUTY OPEN	4-18		201		
S6	SHELVING CLOSED BACK/SIDES	4-19		1		
S7	SHELVING CLOSED BACK/SIDES	4-20		1		
S9	SHELVING HEAVY DUTY OPEN	4-21		10		
S10	SHELVING HEAVY DUTY OPEN	4-22		8		
S19	SHELVES SPECIALTY W/BINS	4-23		1		
S20	SHELVES SPECIALTY W/BINS	4-24		1		
S21	SHELVES SPECIALTY W/BINS	4-25		2		
S22	SHELVES HDPE	4-26		3		

Addendum No. 1 (9/11/2018)

REVISED OFFER FORM

KONA JUDICIARY COMPLEX FURNITURE AND EQUIPMENT, KONA, HAWAI'I, HAWAI'I

ITEM	DESCRIPTION	PAGE	BRAND NAME & MODEL	QTY	UNIT PRICE	TOTAL PRICE
GROUP 4. INDUSTRIAL STORAGE AND SHELVING						
STAN1	STANCHIONS	4-27		8		
TOTAL SUM BID- GROUP 4. STORAGE & SHELVING						\$

Note: Offerors shall prepare their bid based on the quantities shown in this Offer Form and not on the rooms and quantities listed in the technical specifications.

KONA JUDICIARY COMPLEX FURNITURE AND EQUIPMENT, KONA, HAWAI'I, HAWAI'I

ITEM	DESCRIPTION	PAGE	BRAND NAME & MODEL	QTY	UNIT PRICE	TOTAL PRICE
5. TABLES						
MH	MONITOR ARM TABLE MOUNTED	5-1		8		
T1	TABLE SQUARE	5-2		16		
T2	TABLE RECTANGLE WITH MONITOR HOLDER	5-3		7		
T3	TABLE OCCASIONAL	5-4		1		
T4	TABLE RECTANGLE INSET T BASE	5-5		2		
T5	TABLE RECTANGLE W/MODESTY	5-6		0		
T6	TABLE RECTANGLE 4-LEGS	5-7		3		
T7	TABLE 18"D FLIP NEST	5-8		19		
T8	TABLE 36"H	5-9		1		
T9	TABLE RECTANGLE FLIP NEST	5-10		3		
T11	TABLE - FLOOR/WALL SECURED	5-11		10		
T12	TABLE OCCASIONAL	5-12		1		

Addendum No. 1 (9/11/2018)

REVISED OFFER FORM

OF-18

KONA JUDICIARY COMPLEX FURNITURE AND EQUIPMENT, KONA, HAWAI'I, HAWAI'I

ITEM	DESCRIPTION	PAGE	BRAND NAME & MODEL	QTY	UNIT PRICE	TOTAL PRICE
------	-------------	------	--------------------	-----	------------	-------------

5. TABLES

T13	TABLE RECTANGLE 4-LEGS	5-13		12		
T14	TABLE TRAIN FLIP WITH MODESTY	5-14		12		
T15	TABLE RECTANGLE 4-LEGS	5-15		1		
T16	TABLE RECTANGLE MODESTY	5-16		2		
T17	TABLE FLIP TOP, NO POWER	5-17		4		
T18	TABLE FLIP TOP, NO POWER	5-18		21		
T19	TABLE RECTANGLE W/MODESTY	5-19		2		
T21	TABLE SQUARE DISC BASE	5-20		2		
T22	TABLE RECTANGLE T-LEGS	5-21		3		
T23	TABLE RECTANGLE W/MODESTY	5-22		0		
T25	TABLE FLIP TOP, NO POWER	5-23		33		
T25a	TABLE FLIP TOP, WITH POWER	5-24		6		

Addendum No. 1 (9/11/2018)

REVISED OFFER FORM

KONA JUDICIARY COMPLEX FURNITURE AND EQUIPMENT, KONA, HAWAI'I, HAWAI'I

ITEM	DESCRIPTION	PAGE	BRAND NAME & MODEL	QTY	UNIT PRICE	TOTAL PRICE
5. TABLES						
T26	TABLE RECTANGLE T-LEGS	5-25		2		
T30	TABLE ROUND	5-26		1		
T31	TABLE WORKBENCH	5-27		1		
T32	TABLE RECEPTION	5-28		2		
TOTAL SUM BID- GROUP 5. TABLES						\$

Note: Offerors shall prepare their bid based on the quantities shown in this Offer Form and not on the rooms and quantities listed in the technical specifications.

KONA JUDICIARY COMPLEX FURNITURE AND EQUIPMENT, KONA, HAWAI'I, HAWAI'I

ITEM	DESCRIPTION	PAGE	BRAND NAME & MODEL	QTY	UNIT PRICE	TOTAL PRICE
6. SECURITY EQUIPMENT						
MAG	MAGNETOMETER	6-1		3		
SAFE	SAFE	6-2		1		
XRAY	X-RAY SCANNER	6-3		3		
TOTAL SUM BID- GROUP 6. SECURITY EQUIPMENT						\$

Note: Offerors shall prepare their bid based on the quantities shown in this Offer Form and not on the rooms and quantities listed in the technical specifications.